



Distributed Energy Resources Competitive Offer Solutions




DER Solicitation Workshop

February 27, 2020

AGENDA

- Welcome and Introductory Remarks
- Safety Moment
- About LADWP
- Key LADWP Objectives
- Local DER Solicitation Overview
- Q&A

Emergency Assignment

OUR LOCATION	111 N. Hope St., LA, 90012
EMERGENCY LEADER	Denis Obiang
EMS CONTACT Who to call	9-911 from Building Landline
SWEEPER Person to ensure everyone vacated the room	Daniel Baker
FIRST AID PROVIDER	David Castro
EVACUATION COORDINATOR Person to set location and route for evacuation	Stanley Chang
NEAREST AED 	A-level near fitness center
NEAREST FIRE EXTINGUISHER 	Near auditorium
NEAREST FIRST AID KIT 	Security office A-level
OTHER DIRECTIONS AS NEEDED	Julie meet first responders



Outside Safe
Refuge Area 1

DEWAP ROAD

Outside Safe
Refuge Area 3

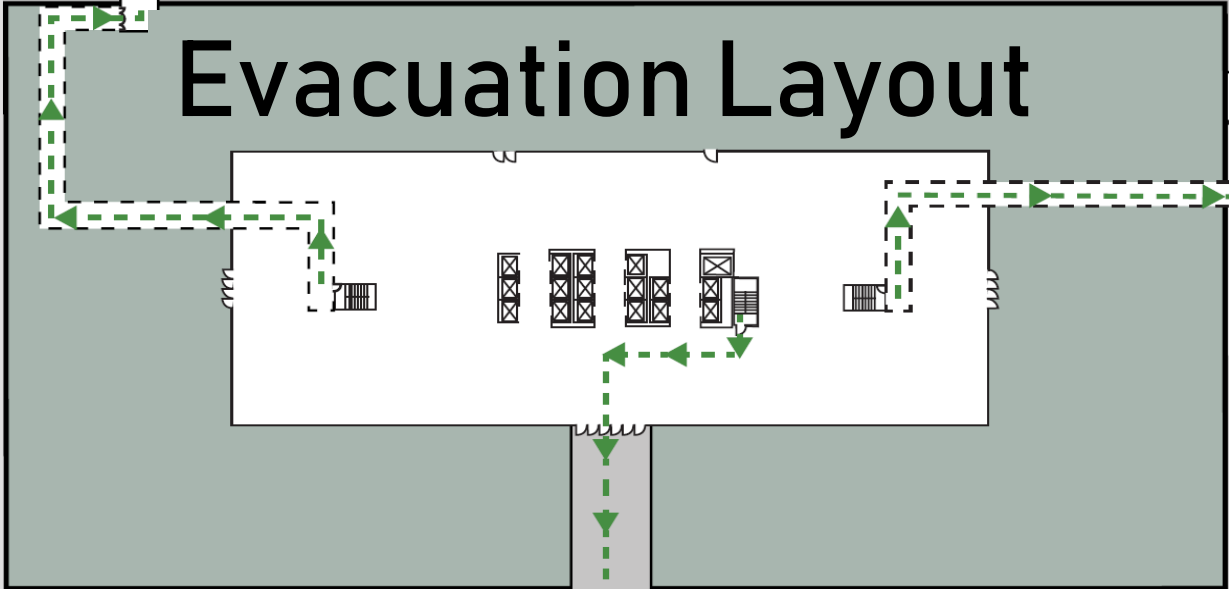
Evacuation Layout

WEST 1ST STREET

WEST TEMPLE STREET

NORTH HOPE STREET

Outside Safe
Refuge Area 2



Safety Moment – Flu Season

Symptoms:

- Fever, cough, shortness of breath within 2-14 days of exposure

Transmission:

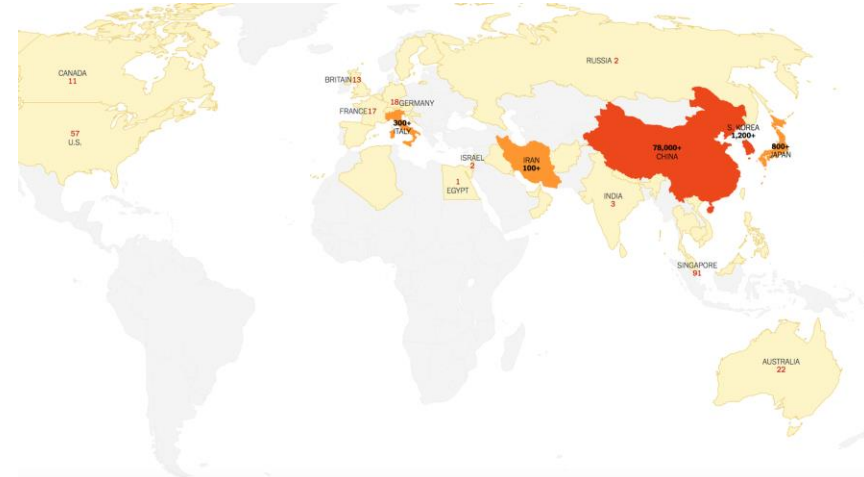
- Air, contact with those infected and touching face after exposure

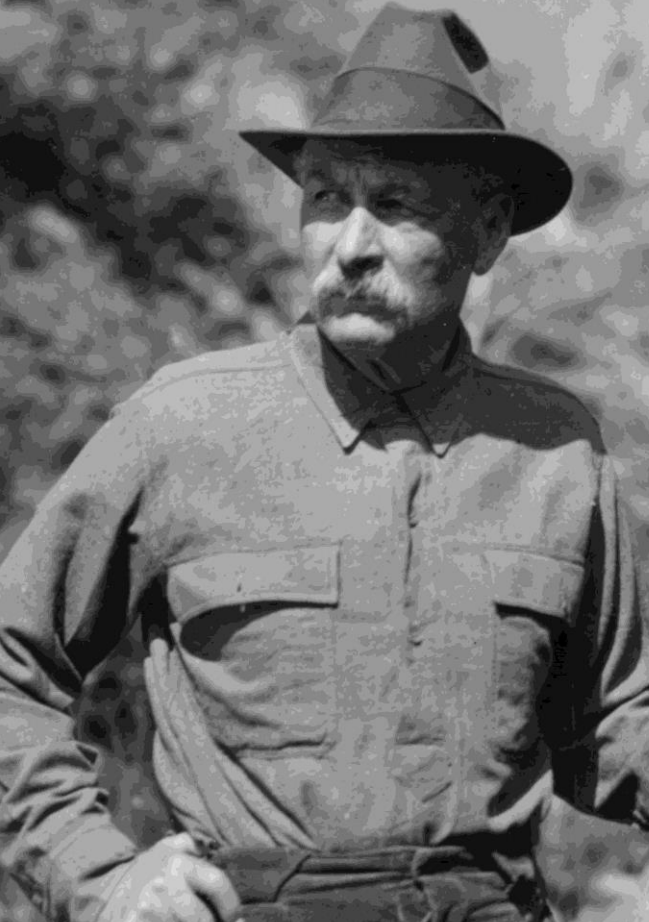
Recommended Precautions:

- Wash hands frequently
- Stay at home if you are sick
- No unnecessary travel to highly impacted areas

CoronaVirus Disease (COVID-19)

- Diagnosed Dec. 2019
- Upper Respiratory Infection
- 75k+ confirmed cases





LA
DWP

Past



Present



Future

LADWP's Power Infrastructure



- Largest Municipal Utility in U.S.
- Vertically Integrated
- Owns more than 25% of state's transmission (not in CAISO)

- Customers - 1.5 million
- Peak Demand - 6.5 GW
- Total System Cap - 10 GW

Transition to 100% Clean Energy



State and Local Initiatives

- 100% Renewable by 2045
- Carbon Neutral by 2050

Clean Grid LA Plan

- Develop the roadmap and framework for LADWP's local grid transformation.
- Ensure **Reliability**, **Environmentally Beneficial**, Allow **Flexibility**, Sensitive to **Rate Impacts**

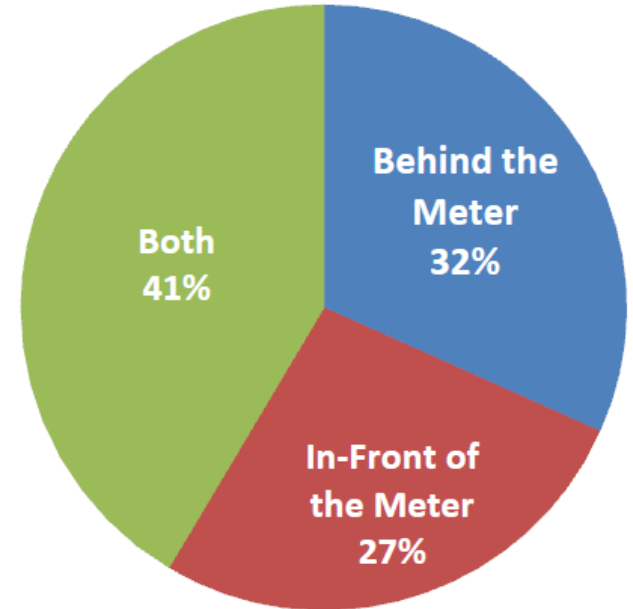
Clean Energy Recent Successes

- Reduced GHG emissions to 49% below 1990 level
- Achieved 32% renewables for CY 2018
- Achieved 1,140 MW of large-scale solar
- Achieved >400 MW customer local solar
- Ranked No. 1 Solar City in U.S. in 2017 and 2018
- Commissioned Beacon 250 MW solar + 20MW lithium battery
- Commissioned 90 MW Springbok 3
- Approved Eland Solar + Storage Center—largest combined solar and energy storage project in nation.
- Over 1,800 publicly available EV chargers installed in L.A.

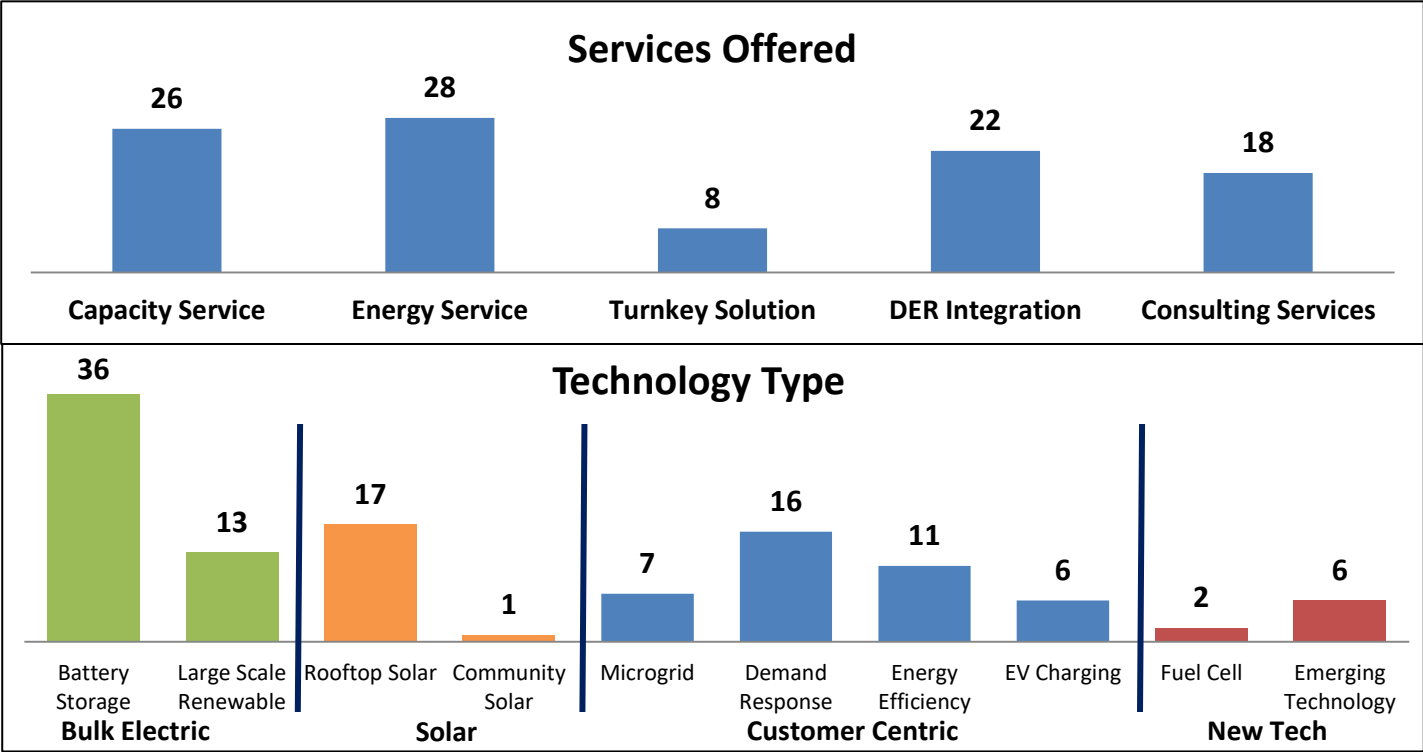
DER RFI Summary

- Issued April 2019
- Received 61 Responses
- Key Questions
 - Assess Market Capabilities
 - Deployment Location
 - Safety
 - Workforce Development

Deployment Location



Assessing the State of the Industry



Note: Several responses fit into multiple categories.



What is Next?

COMPETITIVE DER SOLICITATION



Scope Overview

- Estimated ~30 MW
- Capacity and Energy Services
- Pay-for-Performance Contracts
- Focused on the 4.8 kV Distribution System
- Preferred Development Areas

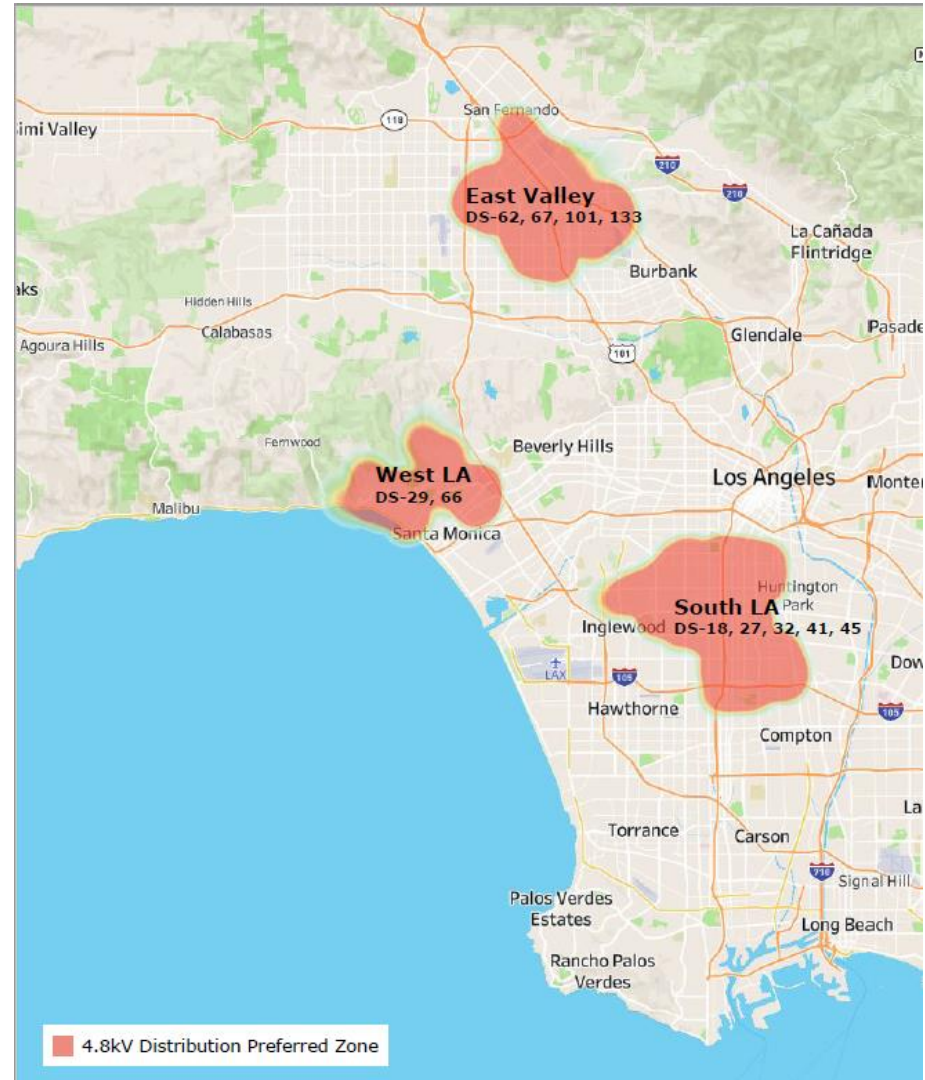
Locational DER Zones

LADWP may identify:

- MW per Zone
- Delivery Schedule
- Duration
- Detailed Map
- Customer Composition

Bidders:

- Propose Capacity and Energy Services



DER Solutions

FTM or BTM INTERCONNECTION

NEW or EXISTING

RPS

Energy
Storage

EE

DR

Other

Any
Combo

Next Steps

Advertise Solicitation

Complete Evaluations

Complete Preliminary Short List

Complete Contract Negotiations

DER Resource(s) In-Service

OPEN DISCUSSION

Please send comments and feedback to:

CGLA_support@ladwp.com