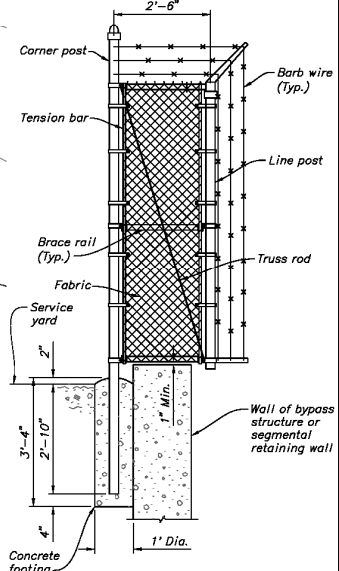


CONTROL POINT COORDINATES		
POINT	NORTHING	EASTING
CP-1	2,084,746.90	6,860,202.33
CP-2	2,084,550.49	6,860,172.42
CP-3	2,084,452.86	6,860,142.89
CP-4	2,084,463.00	6,860,109.36
CP-5	2,084,754.13	6,860,266.56
CP-6	2,084,592.17	6,860,102.74

Note: No grid correction factor has been applied to these coordinates.



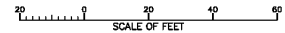
FENCE OVERHANG (NOT TO SCALE)

NOTES

1. Topography is based on drawing prepared by Pacific Western Technologies Ltd. utilizing information obtained from aerial photography completed on June 5, 1998.
2. Coordinates are based on California State Plane Coordinates, Zone 4, Horizontal NAD 1983, Vertical NAVD 1988.
3. Yard elevations are to top of finished surfaces.
4. Slope yard, ditches, and HDPE pipe culverts uniformly between elevations given.

REFERENCE DRAWINGS

- Cover Sheet, Location and Vicinity Maps Z-1
- Drawing Index Z-2
- Site General Plan Z-4
- Diversion and Bypass Structure C-10 and C-11
- Pump Station General Arrangements S-4 thru S-6
- Air Chamber S-21 and S-22



Source: Bureau of Reclamation. Interim draft provided to LADWP, June 2004.

Figure 2-11. Plan View of Pump Station