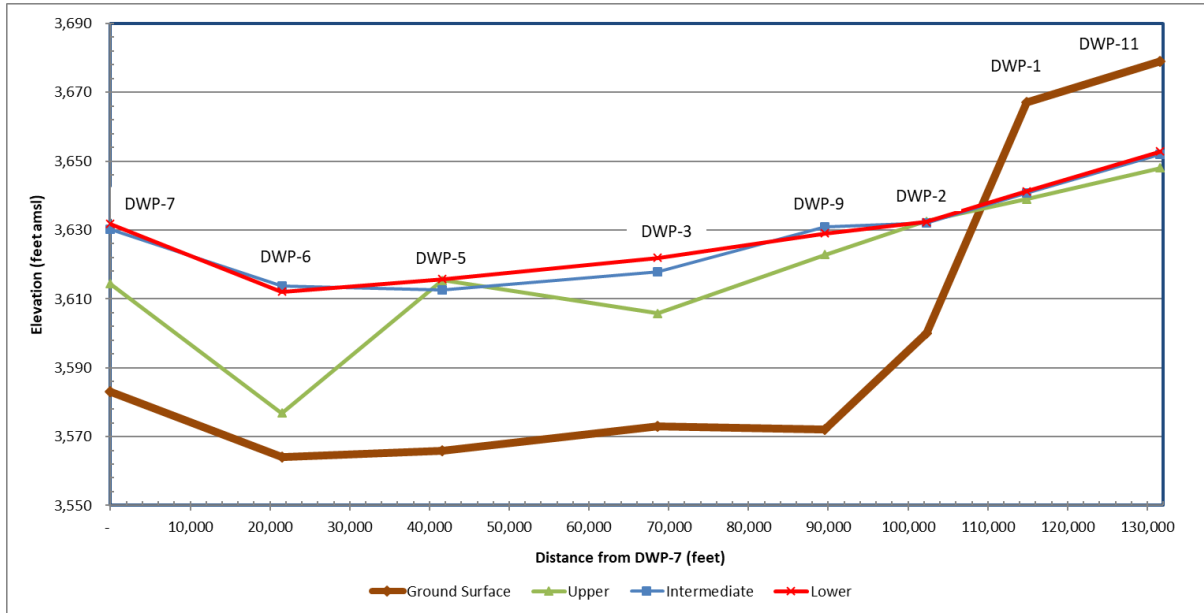


# Owens Lake Cluster Monitoring Wells Cross Section

## September 2021

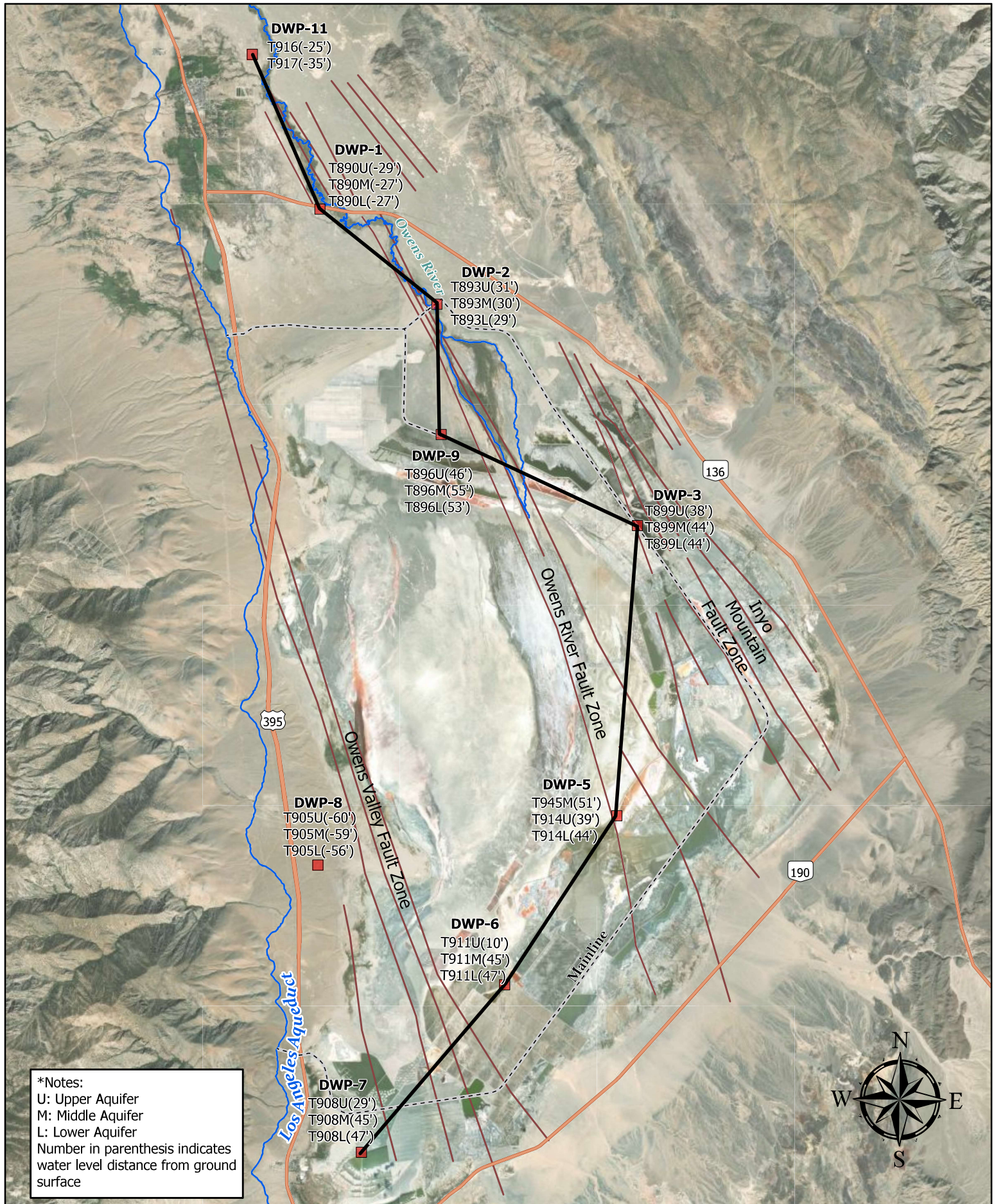


\*Water surface elevation reflects data from September 2021 and LADWP continuously QA/QC field data and updates the cross section

Site	Well ID	Monitoring Well Depth (ft)		
		Upper	Intermediate	Lower
DWP-7	T908	240	780	1,470
DWP-6	T911	300	1,060	1,460
DWP-5	T914	200	820	1,400
DWP-3	T899	170	700	960
DWP-9	T896	320	860	1,360
DWP-2	T893	940	1,250	1,530
DWP-1	T890	370	520	1,230
DWP-11	T916	320	970	1,260

Note: SFIP monitoring well is used for DWP-5 Upper.  
V390 monitoring well is used for DWP-11 Upper.

\*Table shows each well's screen bottom



\*Notes:  
 U: Upper Aquifer  
 M: Middle Aquifer  
 L: Lower Aquifer  
 Number in parenthesis indicates  
 water level distance from ground  
 surface

**Owens Lake Cluster  
 Monitoring Wells  
 July 2020**

■ Cluster Monitoring Wells

