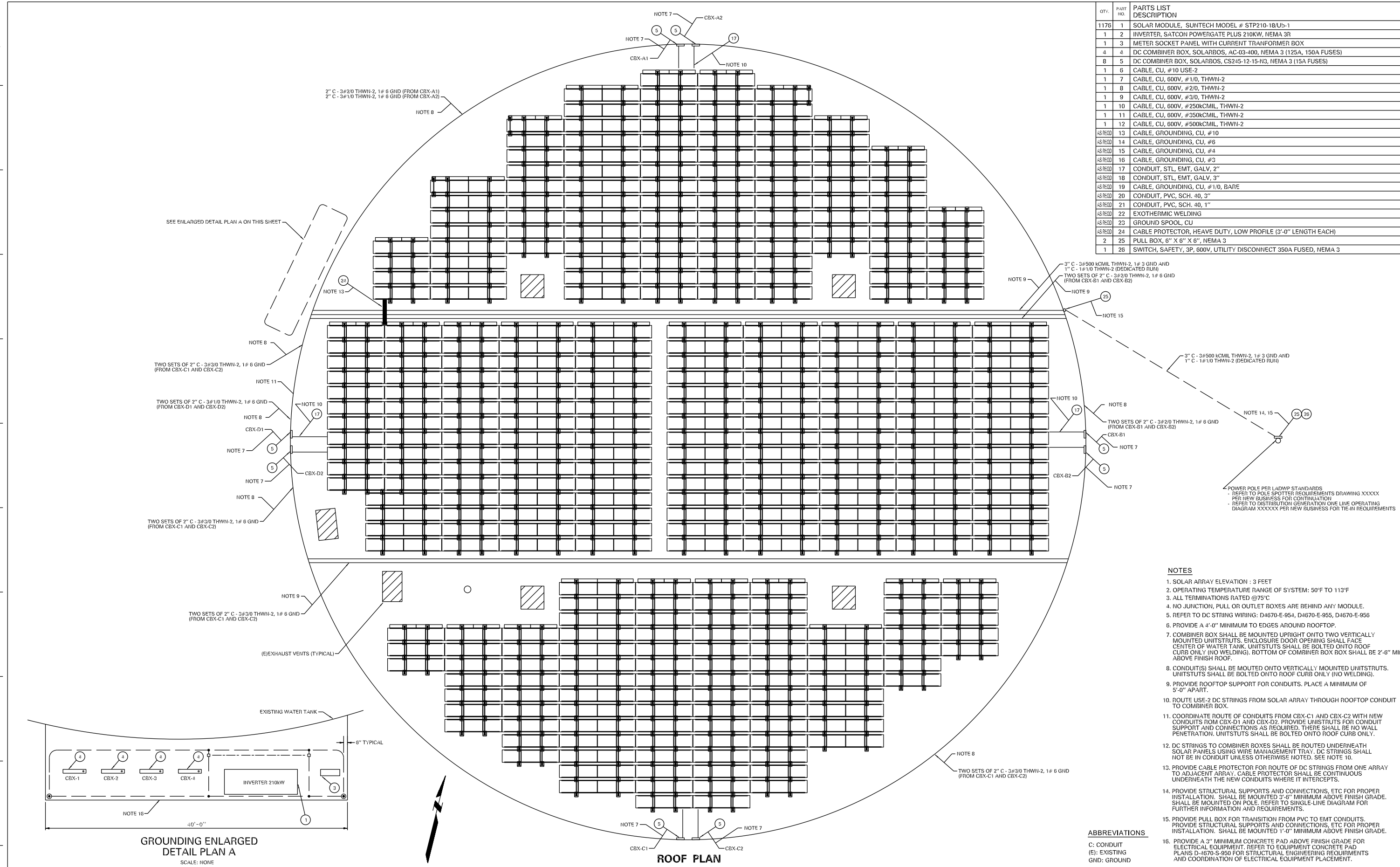


QTY.	PART NO.	PARTS LIST DESCRIPTION
1176	1	SOLAR MODULE, SUNTECH MODEL # STP210-18/Ub-1
1	2	INVERTER, SATCON POWERGATE PLUS 210KW, NEMA 3R
1	3	METER SOCKET PANEL WITH CURRENT TRANSFORMER BOX
4	4	DC COMBINER BOX, SOLARBOS, AC-03-400, NEMA 3 (125A, 150A FUSES)
8	5	DC COMBINER BOX, SOLARBOS, CS245-12-15-N3, NEMA 3 (15A FUSES)
1	6	CABLE, CU, #10 USE-2
1	7	CABLE, CU, 600V, #1/0, THWN-2
1	8	CABLE, CU, 600V, #2/0, THWN-2
1	9	CABLE, CU, 600V, #3/0, THWN-2
1	10	CABLE, CU, 600V, #250KCMIL, THWN-2
1	11	CABLE, CU, 600V, #350KCMIL, THWN-2
1	12	CABLE, CU, 600V, #500KCMIL, THWN-2
45 RECD	13	CABLE, GROUNDING, CU, #10
45 RECD	14	CABLE, GROUNDING, CU, #6
45 RECD	15	CABLE, GROUNDING, CU, #4
45 RECD	16	CABLE, GROUNDING, CU, #3
45 RECD	17	CONDUIT, STL, EMT, GALV, 2"
45 RECD	18	CONDUIT, STL, EMT, GALV, 3"
45 RECD	19	CABLE, GROUNDING, CU, #1/0, BARE
45 RECD	20	CONDUIT, PVC, SCH. 40, 3"
45 RECD	21	CONDUIT, PVC, SCH. 40, 1"
45 RECD	22	EXOTHERMIC WELDING
45 RECD	23	GROUND SPOOL, CU
45 RECD	24	CABLE PROTECTOR, HEAVE DUTY, LOW PROFILE (3'-0" LENGTH EACH)
2	25	PULL BOX, 6" X 6" X 6", NEMA 3
1	26	SWITCH, SAFETY, 3P, 600V, UTILITY DISCONNECT 350A FUSED, NEMA 3



- NOTES**
- SOLAR ARRAY ELEVATION : 3 FEET
 - OPERATING TEMPERATURE RANGE OF SYSTEM: 50°F TO 113°F
 - ALL TERMINATIONS RATED @75°C
 - NO JUNCTION, PULL OR OUTLET BOXES ARE BEHIND ANY MODULE.
 - REFER TO DC STRING WIRING: D4670-E-954, D4670-E-955, D4670-E-956
 - PROVIDE A 4'-0" MINIMUM TO EDGES AROUND ROOFTOP.
 - COMBINER BOX SHALL BE MOUNTED UPRIGHT ONTO TWO VERTICALLY MOUNTED UNITSTRUTS. ENCLOSURE DOOR OPENING SHALL FACE CENTER OF WATER TANK. UNITSTRUTS SHALL BE BOLTED ONTO ROOF CURB ONLY (NO WELDING). BOTTOM OF COMBINER BOX SHALL BE 2'-6" MINIMUM ABOVE FINISH ROOF.
 - CONDUIT(S) SHALL BE MOUNTED ONTO VERTICALLY MOUNTED UNITSTRUTS. UNITSTRUTS SHALL BE BOLTED ONTO ROOF CURB ONLY (NO WELDING).
 - PROVIDE ROOFTOP SUPPORT FOR CONDUITS. PLACE A MINIMUM OF 5'-0" APART.
 - ROUTE USE-2 DC STRINGS FROM SOLAR ARRAY THROUGH ROOFTOP CONDUIT TO COMBINER BOX.
 - COORDINATE ROUTE OF CONDUITS FROM CBX-C1 AND CBX-C2 WITH NEW CONDUITS FROM CBX-D1 AND CBX-D2. PROVIDE UNITSTRUTS FOR CONDUIT SUPPORT AND CONNECTIONS AS REQUIRED. THERE SHALL BE NO WALL PENETRATION. UNITSTRUTS SHALL BE BOLTED ONTO ROOF CURB ONLY.
 - DC STRINGS TO COMBINER BOXES SHALL BE ROUTED UNDERNEATH SOLAR PANELS USING WIRE MANAGEMENT TRAY. DC STRINGS SHALL NOT BE IN CONDUIT UNLESS OTHERWISE NOTED. SEE NOTE 10.
 - PROVIDE CABLE PROTECTOR FOR ROUTE OF DC STRINGS FROM ONE ARRAY TO ADJACENT ARRAY. CABLE PROTECTOR SHALL BE CONTINUOUS UNDERNEATH THE NEW CONDUITS WHERE IT INTERCEPTS.
 - PROVIDE STRUCTURAL SUPPORTS AND CONNECTIONS, ETC FOR PROPER INSTALLATION. SHALL BE MOUNTED 3'-6" MINIMUM ABOVE FINISH GRADE. SHALL BE MOUNTED ON POLE. REFER TO SINGLE-LINE DIAGRAM FOR FURTHER INFORMATION AND REQUIREMENTS.
 - PROVIDE PULL BOX FOR TRANSITION FROM PVC TO EMT CONDUITS. PROVIDE STRUCTURAL SUPPORTS AND CONNECTIONS, ETC FOR PROPER INSTALLATION. SHALL BE MOUNTED 1'-0" MINIMUM ABOVE FINISH GRADE.
 - PROVIDE A 3" MINIMUM CONCRETE PAD ABOVE FINISH GRADE FOR ELECTRICAL EQUIPMENT. REFER TO EQUIPMENT CONCRETE PAD PLANS D-4670-S-950 FOR STRUCTURAL ENGINEERING REQUIREMENTS AND COORDINATION OF ELECTRICAL EQUIPMENT PLACEMENT.

ABBREVIATIONS
 C: CONDUIT
 (E): EXISTING
 GND: GROUND

GROUNDING ENLARGED DETAIL PLAN A
 SCALE: NONE

ROOF PLAN

REVISIONS				REFERENCES		SCALE	DATE	APPROVED	DATE
NUMBER	DATE	INITIALS	LOC.	DESCRIPTION	APP'VD	FILE NAME			

ROOF WATER TANK POWER PLAN
210KW PHOTOVOLTAIC SOLAR
ASCOT WATER TANK FACILITY

ROOF WATER TANK
4401 BOWMAN BLVD.

DEPARTMENT OF WATER AND POWER
 WATER SYSTEM CITY OF LOS ANGELES

DRAWING NUMBER
D 4670-E-953

