

FINANCIAL INCENTIVES

Financial incentives are available for reducing GHG emissions in both common areas and inside tenants' units.

Number of Units	For energy efficiency measures that reduce owner-paid energy costs	For energy efficiency measures that reduce tenant-paid energy costs
5-64	\$5,400/MTCO ₂ e	\$6,750/MTCO ₂ e
65+	\$6,200/MTCO ₂ e	\$7,750/MTCO ₂ e

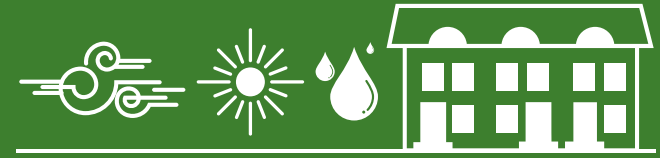
*MTCO₂e = Metric Ton of Carbon Dioxide equivalent

ELIGIBILITY REQUIREMENTS

Participating properties must:

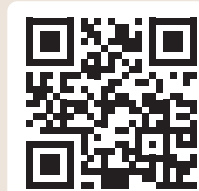
- Consist of five (5) or more units
- Meet affordability requirement of at least 66% of households at or below 80% of Area Median Income and be located in a Disadvantaged Community (DAC)*
- Identify energy improvements that equate to at least 5% in electrical energy savings
- Project contractors must meet prevailing wage, skilled and trained workforce, and licensing requirements, as applicable

**Properties located outside of a DAC may be eligible to participate with proof of rent regulatory agreement or provision of public assistance program documentation.*



WHY PARTICIPATE?

- ✓ Free efficiency assessments
- ✓ Financial incentives
- ✓ Reduce greenhouse gas emissions

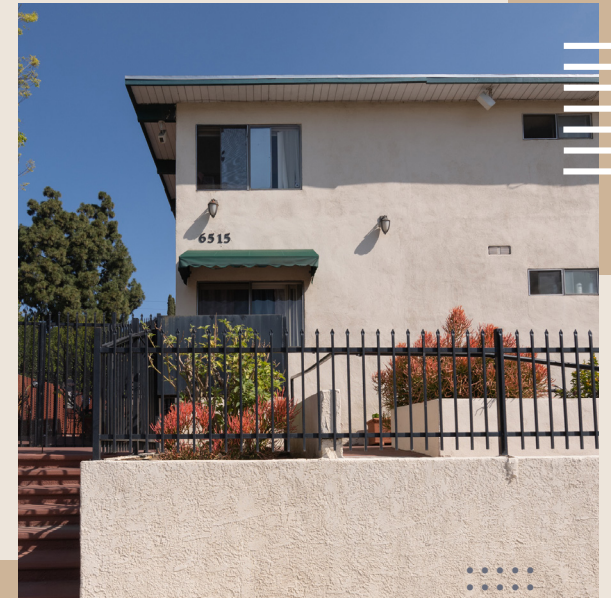


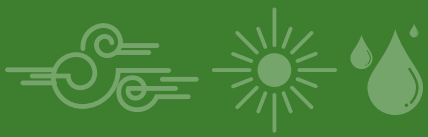
CONTACT US

ladwpcamr.com
 (833) 827-CAMR (2267)
 CAMRinfo@aea.us.org

COMPREHENSIVE AFFORDABLE MULTIFAMILY RETROFITS

Financial assistance to decarbonize low-income, multifamily properties










The Comprehensive Affordable Multifamily Retrofits (CAMR) program offers owners of low-income multifamily properties:

- *Free assessments* to find opportunities to save energy and reduce costs
- *Assistance with work scope development* and obtaining bids from contractors
- *Financial incentives* for reducing greenhouse gas (GHG) emissions

Sample Incentive Calculations

Sample Projects	Sample Scope #1	Sample Scope #2	Sample Scope #3	Sample Scope #4
# Units / # Buildings	5 Units / 1 Building	20 Units / 1 Building	41 Units / 1 Building	154 Units / 1 Building
City / Climate Zone (CZ)	Los Angeles / CZ 08	Los Angeles / CZ 08	Los Angeles / CZ 08	Panorama City / CZ 09
 Lighting		<ul style="list-style-type: none"> • In-unit LED • Common Area LED and Bi-level Controls 	<ul style="list-style-type: none"> • In-unit LED • Common Area LED and Bi-level Controls 	<ul style="list-style-type: none"> • In-unit LED • Common Area LED
 Appliances	<ul style="list-style-type: none"> • Induction Cooktop • Smart Connected Power Strip 	<ul style="list-style-type: none"> • Refrigerators 	<ul style="list-style-type: none"> • Refrigerators 	<ul style="list-style-type: none"> • Common Area Washing Machines
 Water Heating	<ul style="list-style-type: none"> • Heat Pump Water Heater • Faucet Aerators • Low-Flow Showerheads 			<ul style="list-style-type: none"> • Central Heat Pump • Domestic Hot Water (DHW) • Low-Flow Aerators • Central DHW Recirculation Controls
 Heating, Ventilation, & Air-Conditioning (HVAC)	<ul style="list-style-type: none"> • Apartment Heat Pumps 	<ul style="list-style-type: none"> • Apartment Heat Pumps • Duct Sealing 	<ul style="list-style-type: none"> • Apartment Heat Pumps • Duct Sealing 	<ul style="list-style-type: none"> • Central Chiller and Heating Boiler Controls
 Building Envelope	<ul style="list-style-type: none"> • Ceiling Insulation 	<ul style="list-style-type: none"> • Dual Pane Windows • Cool Roof 	<ul style="list-style-type: none"> • Dual Pane Windows • Cool Roof 	
Sample Incentives	\$36,686	\$89,307	\$155,925	\$464,724

Disclaimer: The information provided in this document is solely for demonstration purposes. The CAMR incentive figures are estimates based on hypothetical scenarios and are not intended to represent actual incentive amounts and are not a guarantee of payment. Actual incentives will be calculated on a per project basis and must meet all CAMR program Terms and Conditions. Incentives cannot exceed the total combined cost of materials and labor associated with the implementation of approved measures. All program participation is subject to LADWP final approval.