



Elysian Reservoir

Water Quality Improvement Project



October 1, 2015



Background



Compliance With Updated U.S. E.P.A. - Water Quality Regulations:

- ❖ Long Term 2 Enhanced Surface Water Treatment Rule
- ❖ Stage 2 Disinfectants and Disinfection By-Products Rule

Requires covered storage of existing drinking water reservoirs for water quality reliability.



Background



LADWP Has 13 Large Reservoirs:

- ❖ 4 Reservoirs In Compliance with Floating Covers
 - Green Verdugo Reservoir
 - Eagle Rock Reservoir
 - Lower Franklin Reservoir
 - Santa Ynez Reservoir

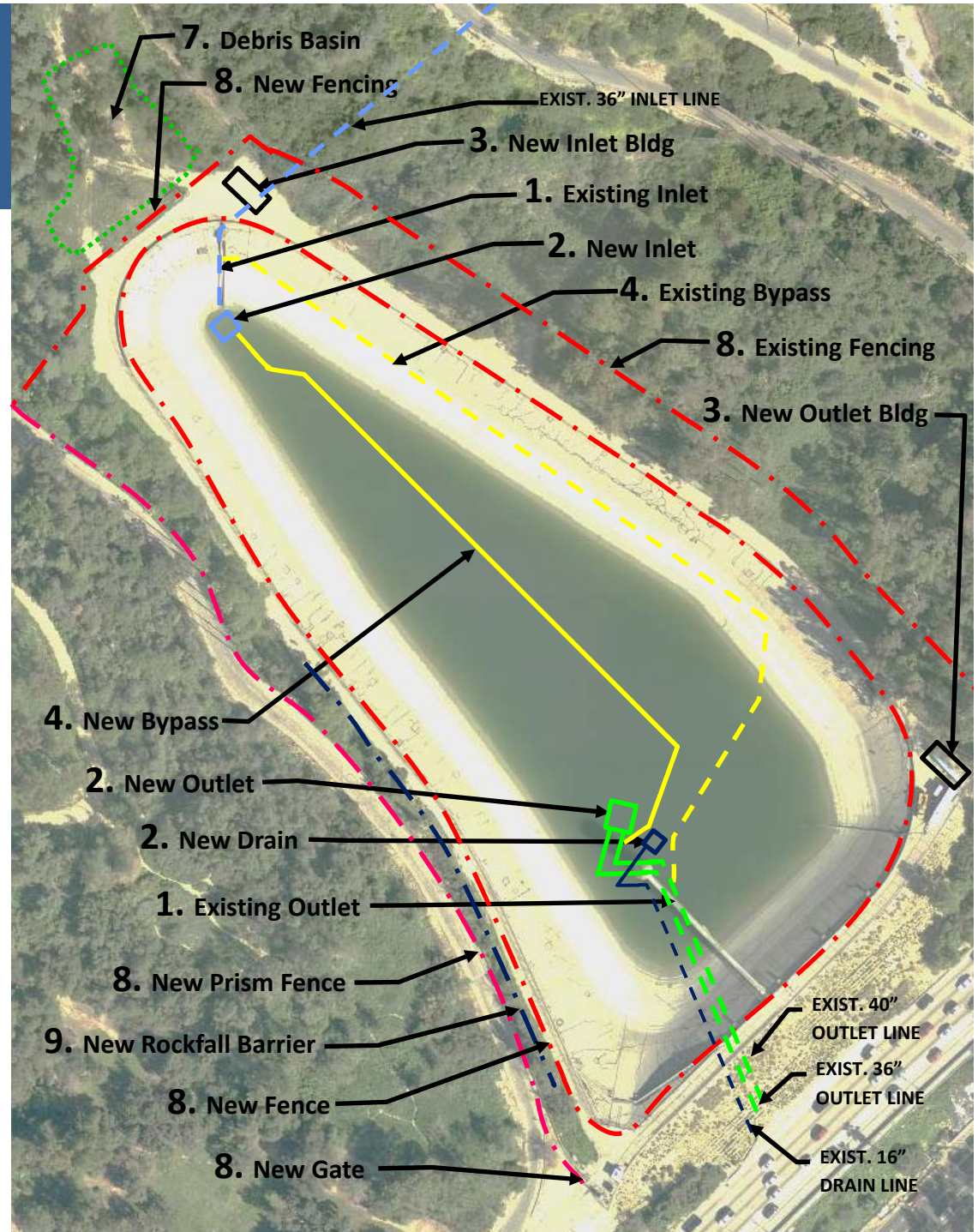
- ❖ 6 Reservoirs Removed From Service
 - Upper and Lower Hollywood Reservoirs
 - Encino Reservoir
 - Lower Stone Canyon Reservoir
 - Ivanhoe Reservoir
 - Silver Lake Reservoir

- ❖ 3 Reservoirs Remaining
 - Upper Stone Canyon Reservoir – Will Install a Floating Cover
 - Los Angeles Reservoir – Shade Balls and UV Treatment
 - [*Elysian Reservoir – Will Install a Floating Cover*](#)



Overview

1. Demolition of Existing Outlet Tower, Bridge, and Inlet Structure
2. Construction of New Inlet, Outlet, and Drain (new vaults, valves, and pipeline)
3. Construction of Two New Hydraulic Control Buildings
4. Abandonment of Existing Bypass and Installation of a New Bypass Line
5. Asphalt Relining of Reservoir and Repaving of Perimeter and Park Roads (not shown for clarity)
6. New Floating Cover (not shown for clarity)
7. Debris Basin Clean Out
8. New Fencing and Upgraded Security at Buildings and Gates
9. Rockfall Barrier
10. Landscaping (not shown for clarity)





Project Status



<i>Construction Cost</i>	\$18.2 Million
<i>Contractor's Notice to Proceed</i>	September 15, 2015
<i>Construction Groundbreaking</i>	October 2015
<i>Reservoir Out of Service</i>	November 2015
<i>Construction Complete</i>	Spring 2018



Construction Mitigation



- ❖ **Full-Time On-Site Construction Manager** – Thayne De Vorss 213-792-8392
- ❖ **Signs** – Will post two large signs with project information.
- ❖ **Working Hour Limitations** – Follow L.A.M.C. Noise Ordinance. Typical construction hours are 7:00 a.m. through 6:00 p.m. Mon-Fri. Work hours may be extended as needed. Saturday work from 8:00 a.m. through 5:00 p.m. may be required.
- ❖ **Stormwater Pollution Control** - Implement Best Management Practices including a Storm Water Pollution Prevention Plan.
- ❖ **Haul Route** – Construction access will be limited to this route. No construction parking on residential streets. Construction vehicle restrictions during Dodger Stadium games and events.
- ❖ **Construction Lay Down** – Lay down will be within the Elysian Reservoir facility.



Construction Mitigation



❖ **Air Quality and Dust Control** –

- Dust mitigation implementation including water trucks to control dust and street sweepers to maintain clean roads.
- Emissions restrictions and monitoring of vehicles and construction equipment.

❖ **Biological, Archaeological, and Cultural Resource Protection** –

- Environmental Awareness Training of all personnel.
- On-site monitoring by qualified archaeologist, paleontologist, and biologist.
- On-site monitoring during bird nesting season.
- Temporarily suspend construction activities if archaeological, paleontological, or Native American resources are encountered.

❖ **Park Road Resurfacing** – Park Row Dr. and Grand View Dr. will be repaved upon completion of the project.



Construction Mitigation



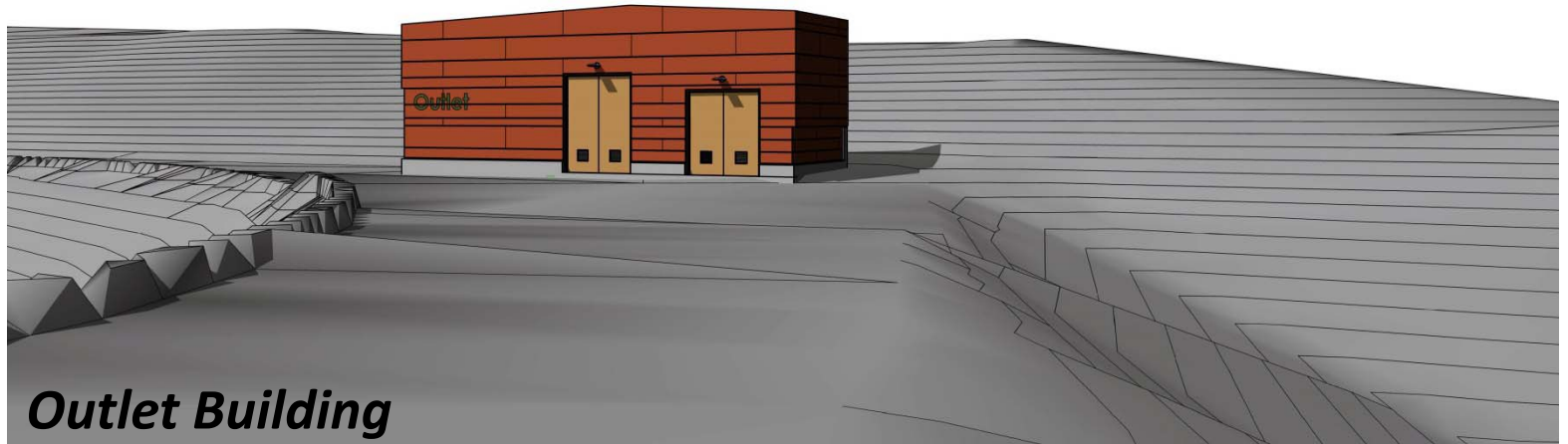


Floating Cover Rendering





Inlet/Outlet Bldgs Rendering





Rockfall Barrier Sample





Prism 3d Fence Sample





Landscaping Palette



Toyon



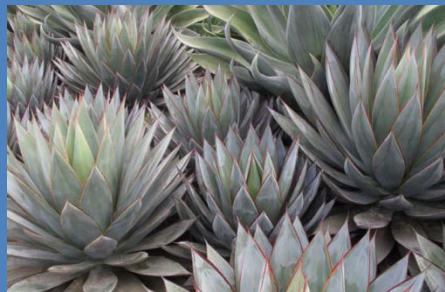
California Sycamore



Blue Agave



Stained Glass Octopus



Blue Flame Agave



Aloe Marlothii



Coral Aloe



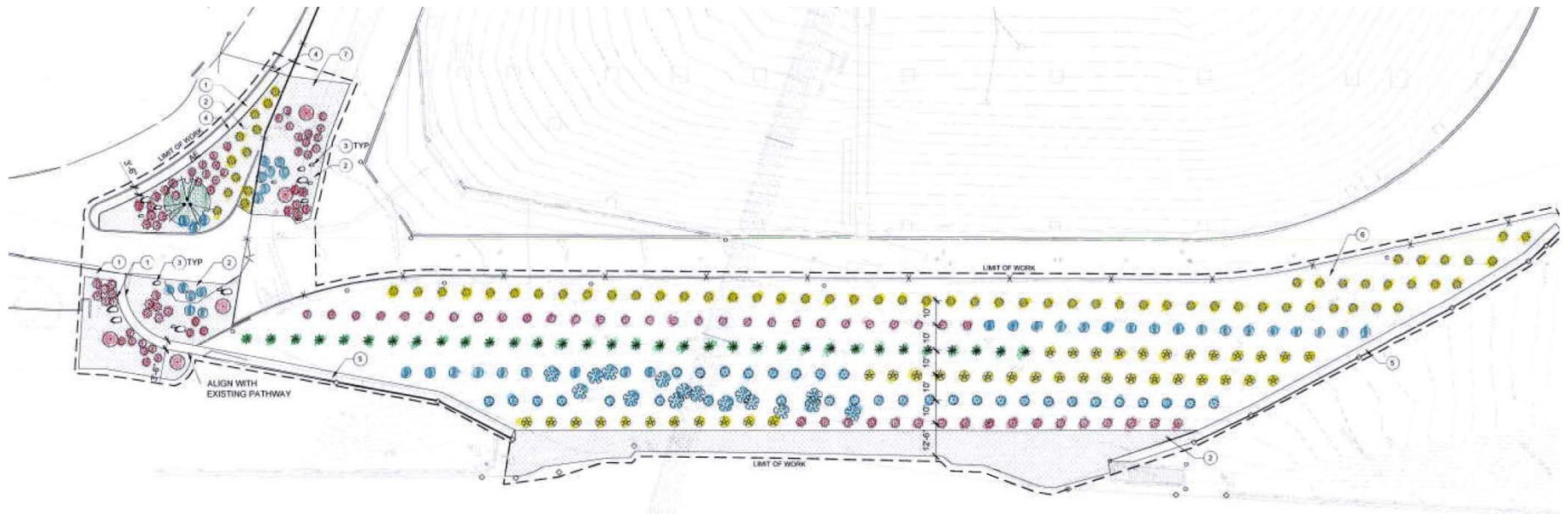
Moonglow Aloe



Red Yucca



Landscaping Plans



PLANT SCHEDULE

TREES	BOTANICAL NAME	COMMON NAME	CONT	SPACING	QTY	REMARKS
	HETEROMELES ARBUTIFOLIA	TOYON	15 GAL	PER PLAN	5	
	PLATANUS RACEMOSA, MULTI	CALIFORNIA SYCAMORE MULTI-TRUNK	36" BOX	PER PLAN	1	DETAIL 4-L2-1
SHRUBS	BOTANICAL NAME	COMMON NAME	CONT	SPACING	QTY	REMARKS
	AGAVE PARRYI HUACHUCENSIS (EXISTING)	BLUE AGAVE	-	-	-	PROTECT IN PLACE
	AGAVE PARRYI HUACHUCENSIS	BLUE AGAVE	5 GAL	10' O.C.	33	DETAIL 5-L2-1
	AGAVE VILMORINIANA 'STAINED GLASS'	STAINED GLASS OCTOPUS AGAVE	5 GAL	10' O.C.	33	DETAIL 5-L2-1
	AGAVE X 'BLUE FLAME'	BLUE FLAME AGAVE	5 GAL	10' O.C.	42	DETAIL 5-L2-1
	ALOE MARLOTHII	ALOE	5 GAL	10' O.C.	70	DETAIL 5-L2-1
	ALOE STRIATA	CORAL ALOE	5 GAL	10' O.C.	46	DETAIL 5-L2-1
	ALOE X 'MOONGLOW'	ALOE	5 GAL	10' O.C.	41	DETAIL 5-L2-1
	HESPERALOE PARVIFLORA	RED YUCCA	5 GAL	10' O.C.	61	DETAIL 5-L2-1

REFERENCE NOTES SCHEDULE

SYMBOL	DESCRIPTION	KEY	COLOR	PRODUCT INFORMATION
①	STABILIZED DECOMPOSED GRANITE PATHWAY, 1/4" DIA. MAX PER APPROVED SAMPLE		DESERT GOLD	DETAIL 1/L2-1 SEE SPEC
②	UNSTABILIZED DECOMPOSED GRANITE MULCH, 1/4" DIA. MAX PER APPROVED SAMPLE		DESERT GOLD	DETAIL 6/L2-1 2:1 MAX SLOPE
③	BOULDER (SIZE, QUANTITY) 4 @ 2' DIA; 5 @ 3' DIA; 8 @ 4' DIA.		BUFF SANDSTONE TO MATCH EXISTING	PER APPROVED SAMPLE
④	ALUMINUM EDGING	AE	BROWN	DETAIL 1/L2-1; SEE SPEC
⑤	(E) ASPHALT CONCRETE PATHWAY - PROTECT IN PLACE	-	-	-
⑥	DO NOT REGRADE RESERVOIR SLOPE NO MULCH ON SLOPE	-	-	-
⑦	REGRADE AS REQUIRED TO ACHIEVE 2:1 MAX. SLOPE	-	-	-

DEMOLITION NOTES

CONTRACTOR SHALL REMOVE ALL WEEDS, STONES, ORGANIC AND INORGANIC MATERIALS FROM ALL AREAS TO BE PLANTED. EXISTING AGAVE PARRYI 'HUACHUCENSIS' ARE TO REMAIN. SEE SPECIFICATIONS, L2-2.



SCALE: 1" = 10'



Contact Information



Helen Olivares, P.E.

Project Manager

Helen.Olivares@ladwp.com

213-367-5263 (o), 213-792-8279 (c)

Thayne De Vorss

Construction Manager

Thayne.DeVorss@ladwp.com

213-792-8392 (c)

Jason Stinnett

Community Relations

Jason.Stinnett@ladwp.com

213-367-3803 (o)

Steve P. Rados, Inc.

Contractor

www.ladwp.com/elysian