

ELYSIAN RESERVOIR WATER QUALITY IMPROVEMENT PROJECT



PROJECT OVERVIEW

As approved by the Los Angeles City Council on December 11, 2012, LADWP will be installing a floating cover over the open water surface of the existing Elysian Reservoir to comply with updated U.S. Environmental Protection Agency water quality regulations. The Elysian Reservoir Water Quality Improvement Project includes:

- The installation of a floating cover over the reservoir.
- The installation of larger diameter pipelines.

The construction of the floating cover and the larger diameter pipelines will allow LADWP to maintain and improve the quality, reliability, and stability to the service area.



FIGURE 1: Elysian Reservoir floating cover concept rendering.

CONSTRUCTION DETAILS

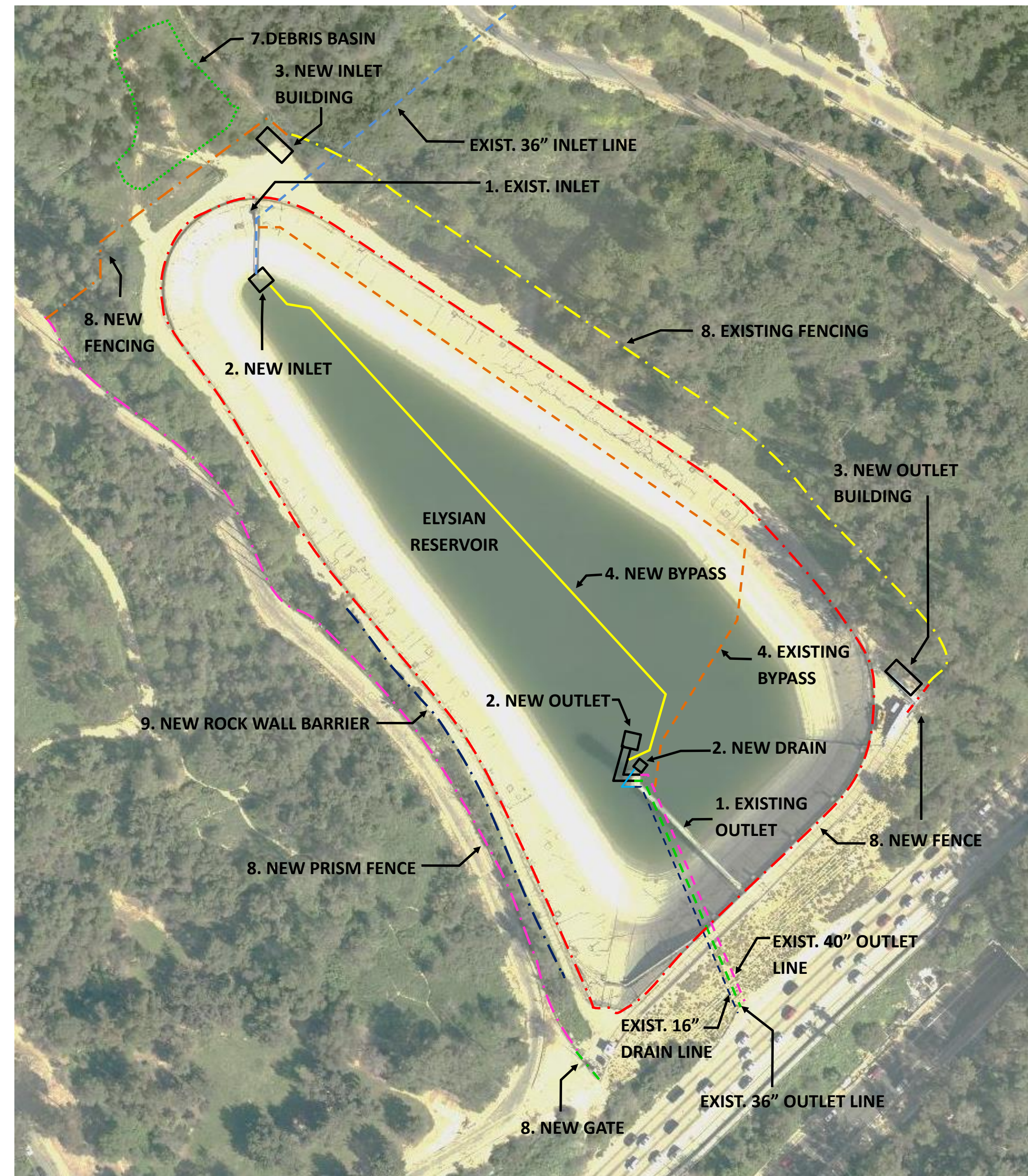


FIGURE 2: Project construction details.

LEGEND

1. Demolition of Existing Outlet Tower, Bridge, Bridge Pier, and Inlet Structure
2. Construction of New Inlet, Outlet, and Drain (new vaults, valves, and pipeline)
3. Construction of Two New Hydraulic Control Buildings
4. Abandonment of Existing Bypass and Installation of a New Bypass Line
5. Asphalt Relining of Reservoir and Repaving of Perimeter and Park Roads (not shown for clarity)
6. New Floating Cover with Appurtenances (not shown for clarity)
7. Debris Basin Clean Out
8. New Fencing and Upgraded Security at Buildings and Gates
9. Rockfall Barrier
10. Landscaping (not shown for clarity)

CONSTRUCTION MITIGATION

- **Full-Time On-Site Construction Manager** – Thayne DeVorss 213-792-8392
- **Signs** – Will post two large signs with project information.
- **Work Hours** – Follow L.A.M.C. Noise Ordinance. Typical construction hours are 7:00 a.m. through 6:00 p.m. Mon-Fri. Work hours may be extended as needed. Saturday work from 8:00 a.m. through 5:00 p.m. may be required.
- **Stormwater Pollution Control** - Implement Best Management Practices including a Storm Water Pollution Prevention Plan.
- **Haul Route** – Construction access will be limited to this route. Construction vehicle restrictions during Dodger Stadium games and events.
- **Construction Lay Down** – Lay down will be within the Elysian Reservoir facility.
- **Air Quality and Dust Control** –
 - Dust mitigation implementation including water trucks to control dust and street sweepers to maintain clean roads.
 - Emissions restrictions and monitoring of vehicles and construction equipment.
- **Biological, Archaeological, and Cultural Resource Protection** –
 - Environmental Awareness Training of all personnel.
 - On-site monitoring by qualified archaeologist, paleontologist, and biologist.
 - On-site monitoring during bird nesting season.
 - Temporarily suspend construction activities if archaeological, paleontological, or Native American resources are encountered.
- **Park Road Resurfacing** – Park Row Dr. and Grand View Dr. will be repaved upon completion of the project.

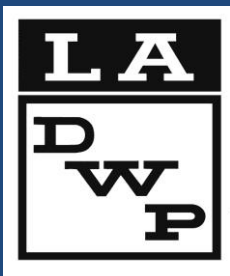


FIGURE 3: Haul Route.

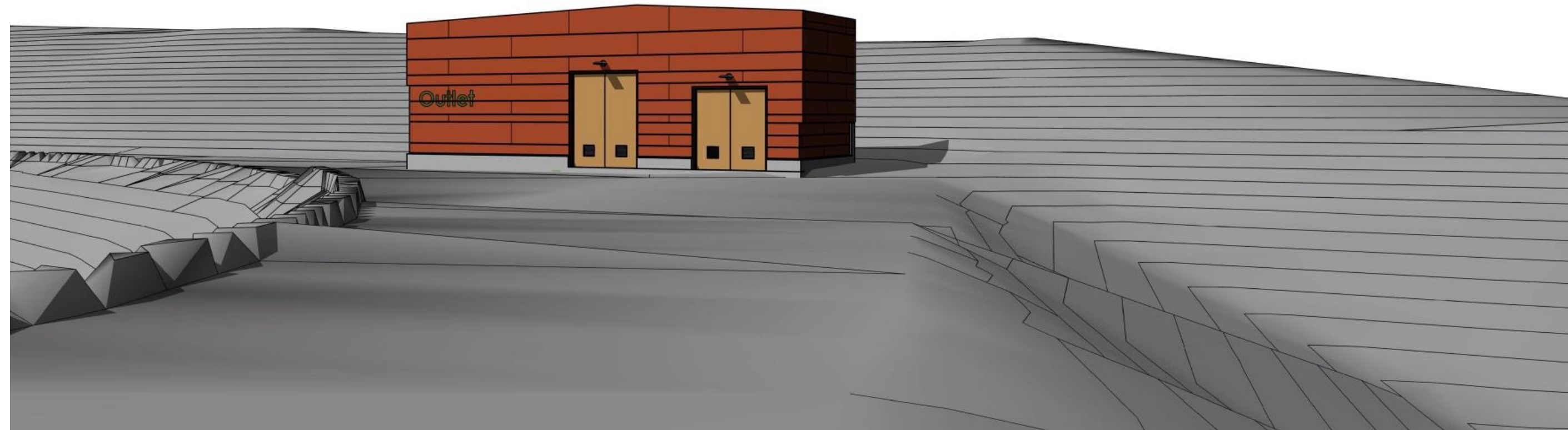
STATUS

Estimated Construction Cost	\$18.2 Million
Contract Awarded	June 2, 2015
Contractor's Notice to Proceed	September 15, 2015
Construction Groundbreaking	October 2015
Reservoir Out-of-Service	November 2015
Construction Complete	Spring 2018

ELYSIAN RESERVOIR WATER QUALITY IMPROVEMENT PROJECT



INLET AND OUTLET BUILDING RENDERINGS

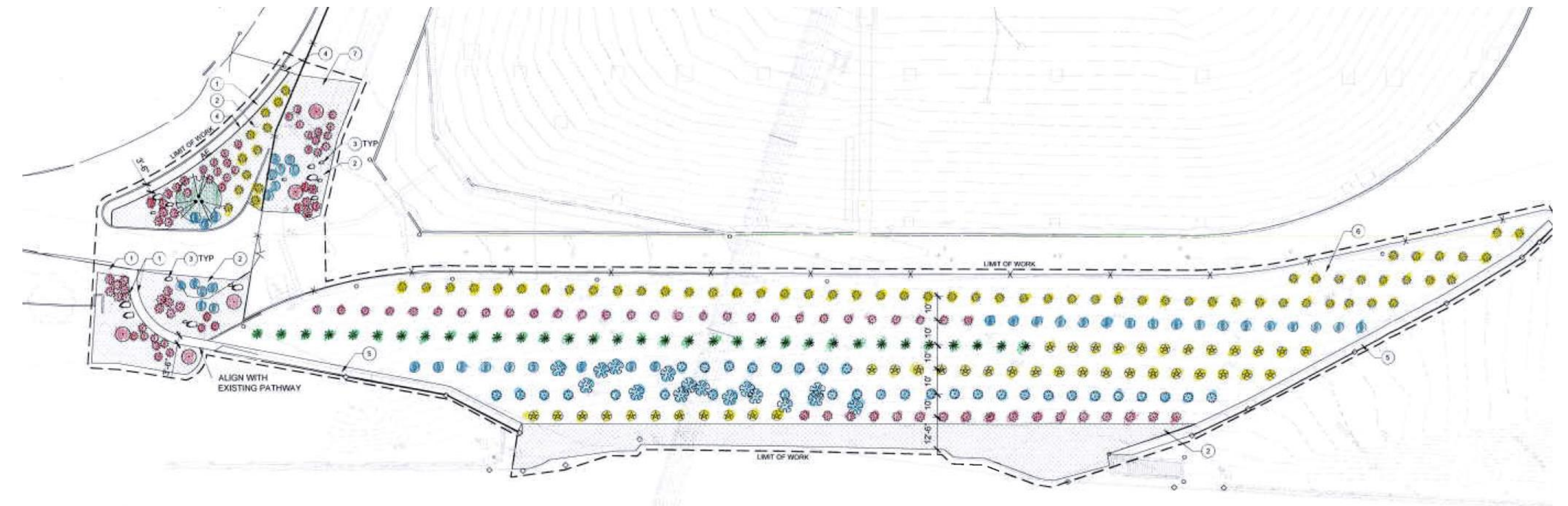


Hydraulic Control Outlet Building



Hydraulic Control Inlet Building

ENTRANCE AND DAM LANDSCAPING



PLANT SCHEDULE						
TREES	BOTANICAL NAME	COMMON NAME	CONT.	SPACING	QTY	REMARKS
	HETEROMELES ARBUTIFOLIA	TOYON	15 GAL.	PER PLAN	3	
	PLATANUS RACEMOSA, MULTI	CALIFORNIA SYCAMORE MULTI-TRUNK	36" BOX	PER PLAN	1	DETAIL 4.12-1
SHRUBS						
	BOTANICAL NAME	COMMON NAME	CONT.	SPACING	QTY	REMARKS
	AGAVE PARRYI HUACHUCENSIS (EXISTING)	BLUE AGAVE	-	-	-	PROTECT IN PLACE
	AGAVE PARRYI HUACHUCENSIS	BLUE AGAVE	5 GAL.	10' O.C.	33	DETAIL 5.12-1
	AGAVE VILMORNIANA "STAINED GLASS"	STAINED GLASS OCTOPUS AGAVE	5 GAL.	10' O.C.	33	DETAIL 5.12-1
	AGAVE X "BLUE FLAME"	BLUE FLAME AGAVE	5 GAL.	10' O.C.	42	DETAIL 5.12-1
	ALOE MARLOTHII	ALOE	5 GAL.	10' O.C.	70	DETAIL 5.12-1
	ALOE STRIATA	CORAL ALOE	5 GAL.	10' O.C.	46	DETAIL 5.12-1
	ALOE X "MOONGLOW"	ALOE	5 GAL.	10' O.C.	41	DETAIL 5.12-1
	HESPERALOE PARVIFLORA	RED YUCCA	5 GAL.	10' O.C.	61	DETAIL 5.12-1

REFERENCE NOTES SCHEDULE				
SYMBOL	DESCRIPTION	KEY	COLOR	PRODUCT INFORMATION
(1)	STABILIZED DECOMPOSED GRANITE PATHWAY, 1/4" DIA. MAX PER APPROVED SAMPLE		DESERT GOLD	DETAIL 14.2-1 SEE SPEC
(2)	UNSTABILIZED DECOMPOSED GRANITE MULCH, 1/4" DIA. MAX PER APPROVED SAMPLE		DESERT GOLD	DETAIL 6.12-1 21 MAX SLOPE
(3)	BOULDER (SIZE QUANTITY) 4 @ 2' DIA. 5 @ 3' DIA. 4 @ 4' DIA.			PER APPROVED SAMPLE MATCH EXISTING
(4)	ALUMINUM EDGING	AE	BROWN	DETAIL 14.2-1; SEE SPEC
(5)	ASPHALT CONCRETE PATHWAY - PROTECT IN PLACE			
(6)	DO NOT REGRADE RESERVOIR SLOPE NO MULCH ON SLOPE			
(7)	REGRADE AS REQUIRED TO ACHIEVE 2:1 MAX. SLOPE			

DEMOLITION NOTES
CONTRACTOR SHALL REMOVE ALL WEEDS, STONES, ORGANIC AND INORGANIC MATERIALS FROM ALL AREAS TO BE PLANTED. EXISTING AGAVE PARRYI HUACHUCENSIS ARE TO REMAIN. SEE SPECIFICATIONS, 1.3-2.

Landscape Plan

ROCKFALL BARRIER AND 3-D PRISM FENCING SAMPLES



Rockfall Barrier



3-D Prism Fencing



Plant Palette