


LORP Riverine Riparian Area  
 Los Angeles Aqueduct Intake to  
 Blackrock Spreading Area

-  Spillgate Channels
-  Currently Dry Reach
-  Open Water
-  L A Aqueduct
-  Blackrock Waterfowl Management Area
-  Power Transmission Lines
-  Ditches
-  Secondary and Dirt Roads
-  Highway

1 Miles

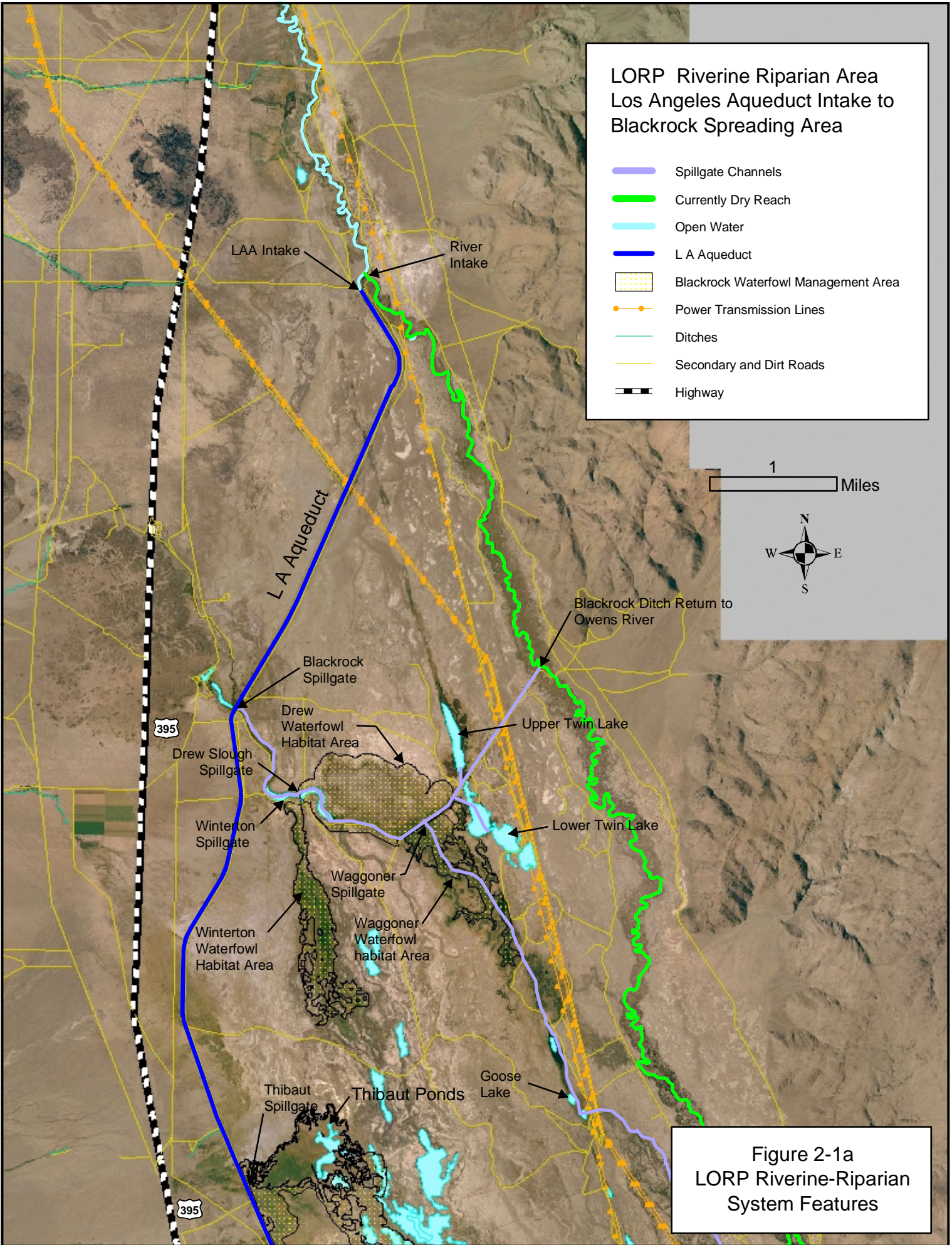
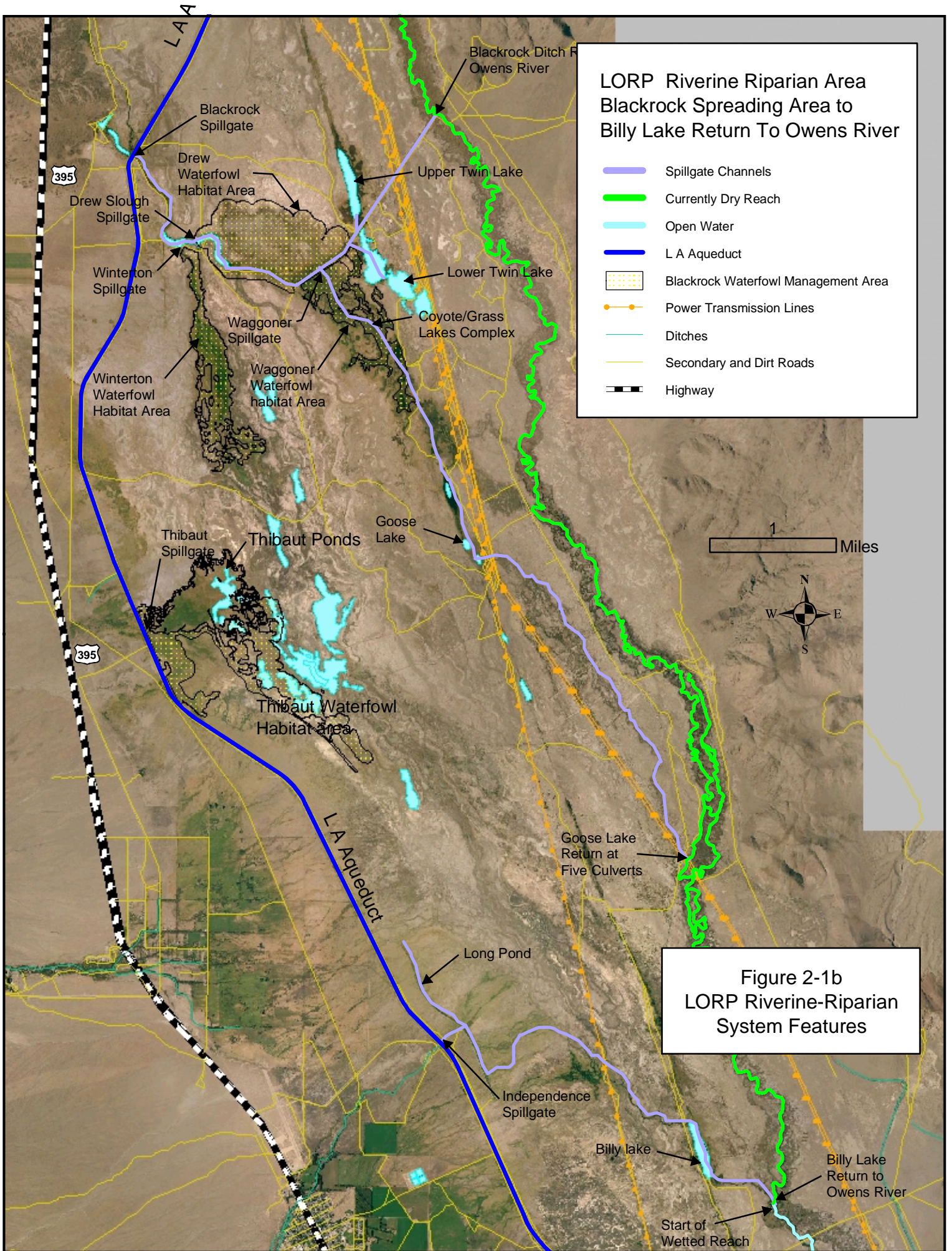
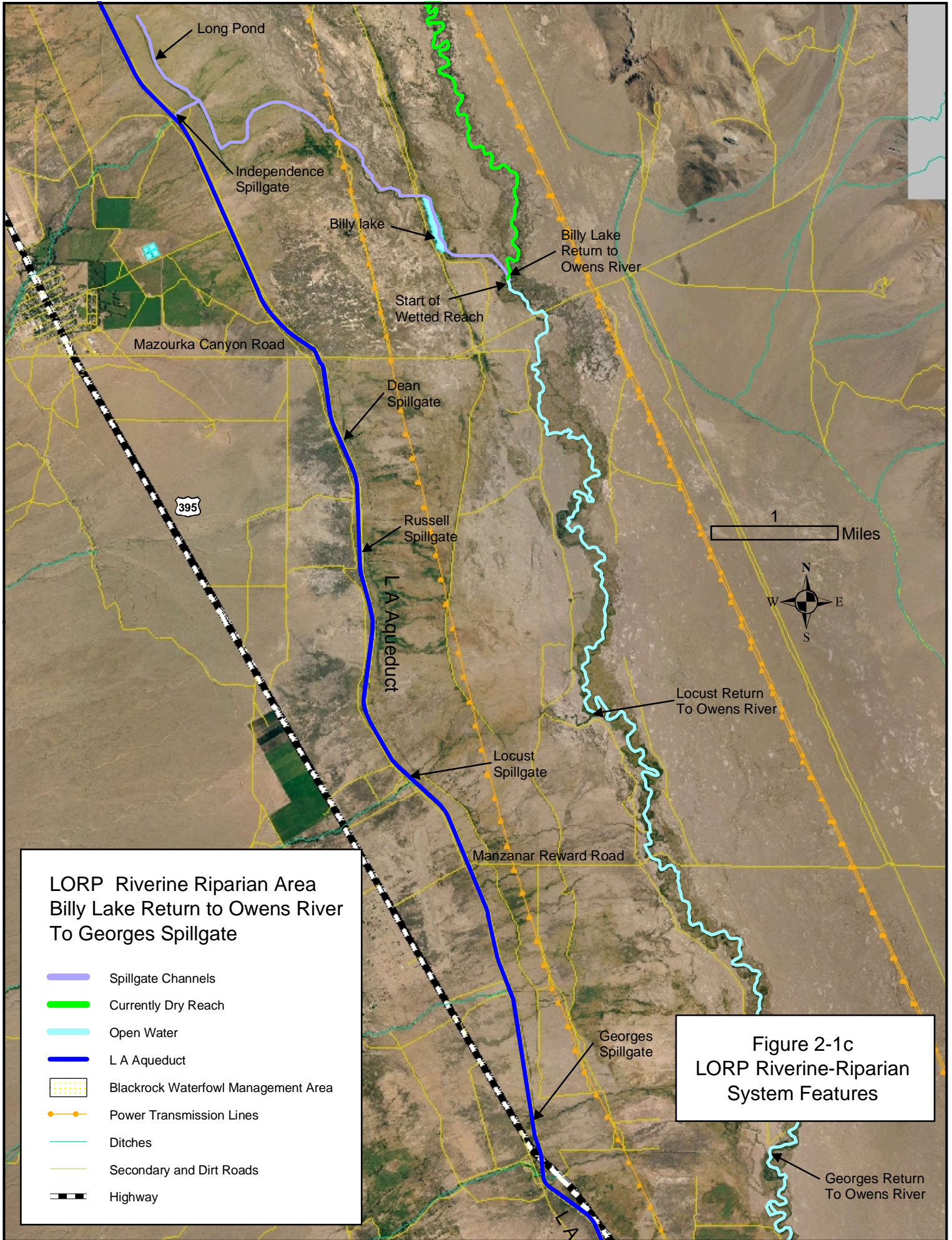


Figure 2-1a  
 LORP Riverine-Riparian  
 System Features



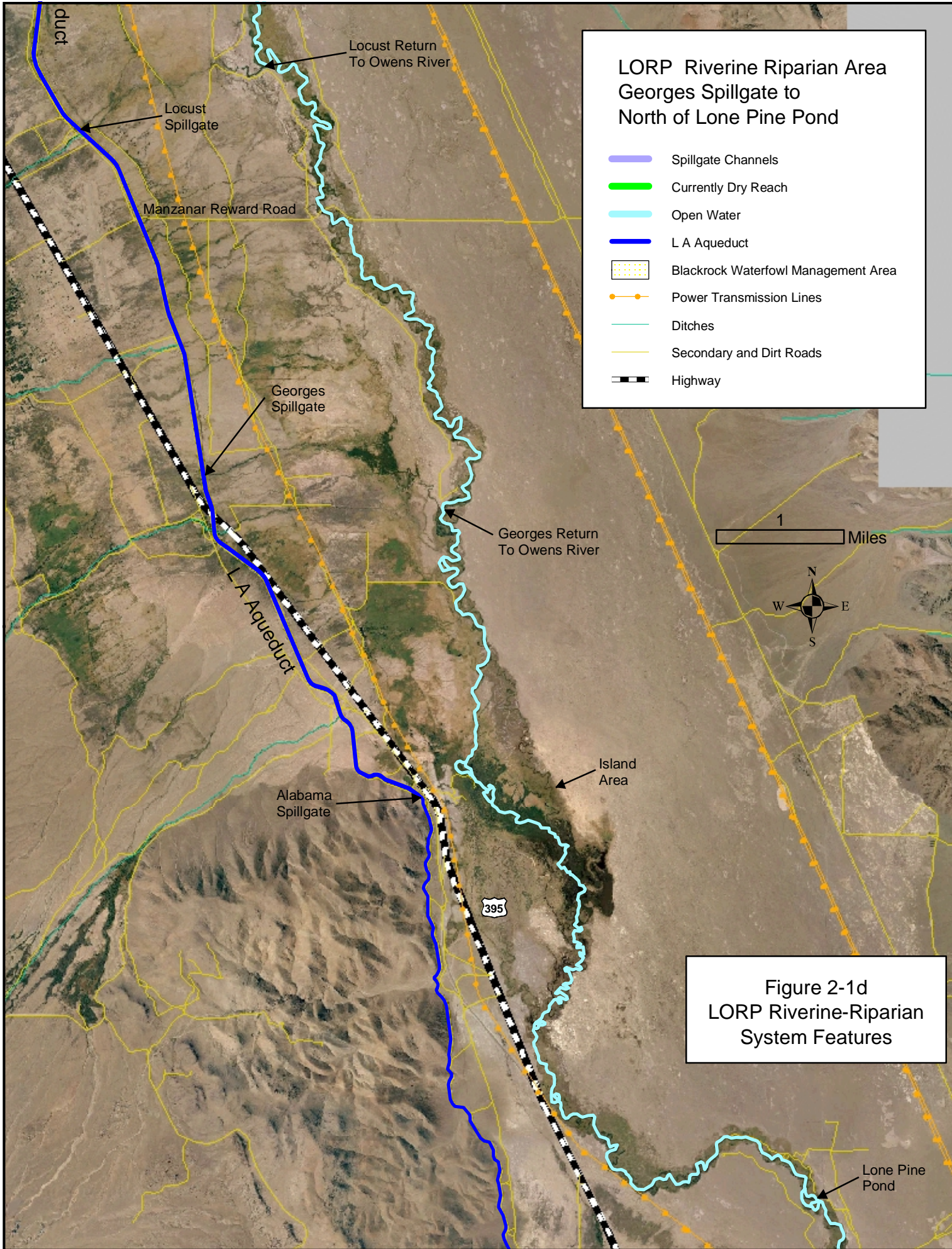


**LORP Riverine Riparian Area  
Billy Lake Return to Owens River  
To Georges Spillgate**

- Spillgate Channels
- Currently Dry Reach
- Open Water
- L A Aqueduct
- Blackrock Waterfowl Management Area
- Power Transmission Lines
- Ditches
- Secondary and Dirt Roads
- Highway

**Figure 2-1c  
LORP Riverine-Riparian  
System Features**

Georges Return To Owens River



**LORP Riverine Riparian Area  
Georges Spillgate to  
North of Lone Pine Pond**

- Spillgate Channels
- Currently Dry Reach
- Open Water
- L A Aqueduct
- Blackrock Waterfowl Management Area
- Power Transmission Lines
- Ditches
- Secondary and Dirt Roads
- Highway

1 Miles



**Figure 2-1d  
LORP Riverine-Riparian  
System Features**

duct

Locust Spillgate

Locust Return To Owens River

Manzanar Reward Road

Georges Spillgate

Georges Return To Owens River

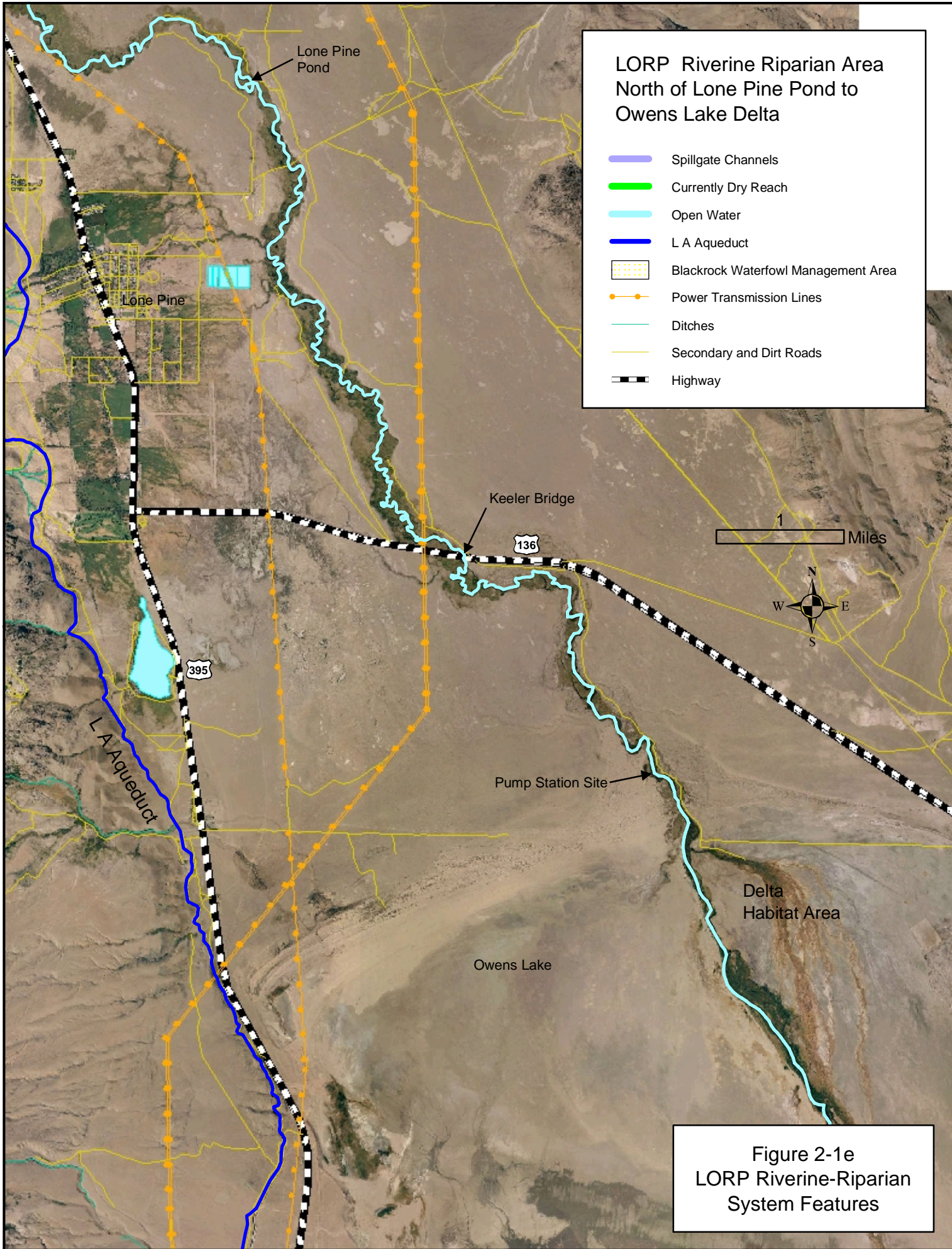
L A Aqueduct

Island Area

Alabama Spillgate

395

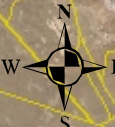
Lone Pine Pond



**LORP Riverine Riparian Area  
North of Lone Pine Pond to  
Owens Lake Delta**

- Spillgate Channels
- Currently Dry Reach
- Open Water
- L A Aqueduct
- Blackrock Waterfowl Management Area
- Power Transmission Lines
- Ditches
- Secondary and Dirt Roads
- Highway

1 Miles



**Figure 2-1e  
LORP Riverine-Riparian  
System Features**