



December 17, 2021



LA100 Study

The 100 Percent Renewable Energy Study was completed and final report was released on March 24, 2021.

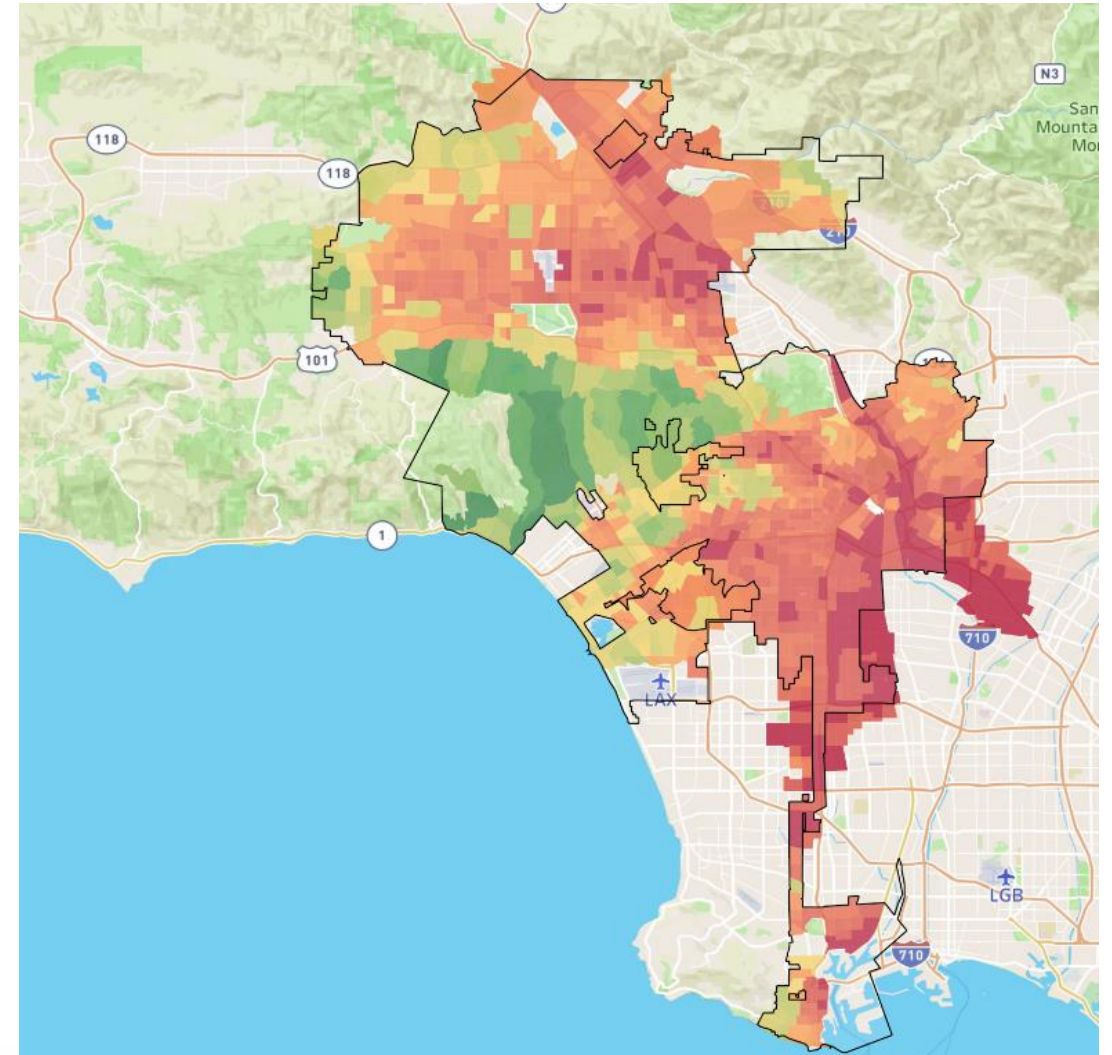
- 100% renewable energy is achievable
- We can achieve 100% by 2035
- Significant investment (approx. \$50-80B) and job creation
- Increase in building and transportation electrification
- There will be significant growth in customer-facing programs like rooftop solar, storage, demand response and electric vehicles
- Expansion of Existing Programs and development of New Programs



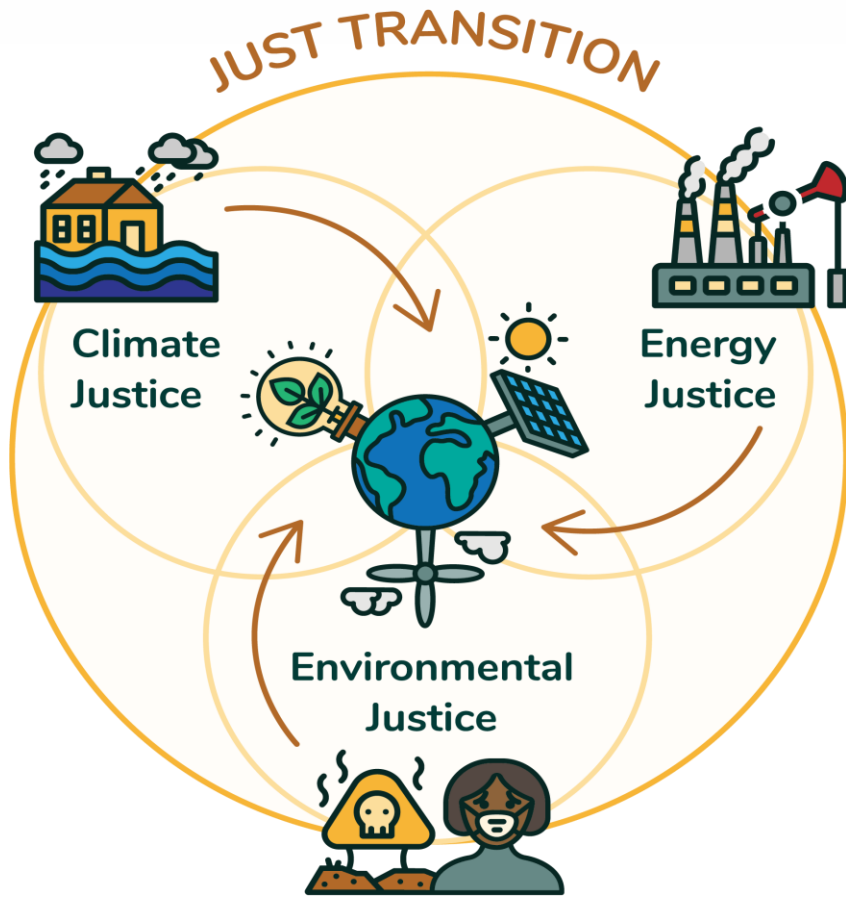
Current State

- CalEnviroScreen uses **environmental, health, and socioeconomic** information to produce scores for every census tract in the state
- **Approximately 47%** of the City of Los Angeles is designated as Disadvantaged Community (DAC)

CalEnviroScreen 3.0



JUST TRANSITION

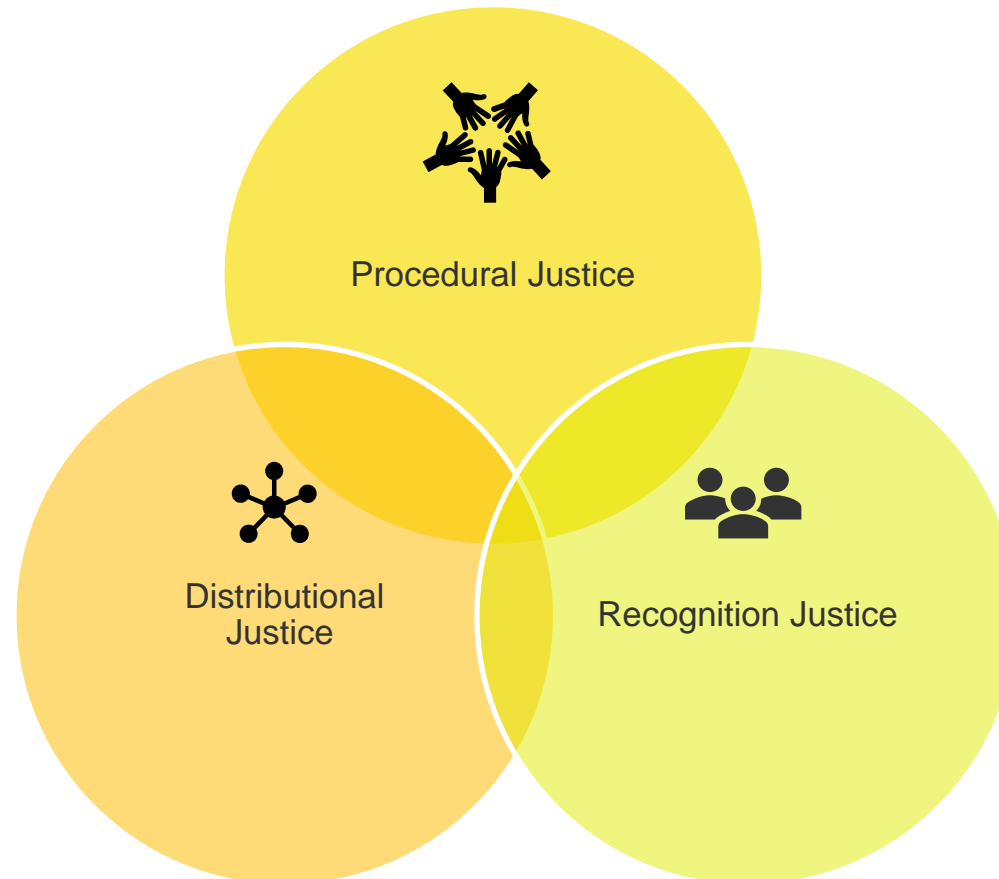



**LA100
Equity
Strategies
is organized
around
three tenets
of justice**

Enable **community leadership** in the process

Ensure **just and equitable distribution** of benefits and negative impacts of clean energy transition

Understand and address past and current energy inequities



An aerial photograph of a city, likely Phoenix, Arizona, showing a dense urban area with numerous buildings, streets, and green spaces. In the background, a range of mountains is visible under a clear sky. The lighting suggests it is either early morning or late afternoon, with long shadows and warm tones. A semi-transparent black box is overlaid on the center of the image, containing white text with some words highlighted in green.

All communities will **share in the benefits** of the clean energy transition—but **improving equity in participation and outcomes** would require intentionally designed policies and programs.

An aerial photograph of a city, showing a dense urban grid. The top right corner of the image is heavily blurred and has a warm, golden-yellow glow, suggesting a sunset or sunrise. A semi-transparent dark grey rectangular box is overlaid on the center-left of the image, containing text. The text is in white and green colors.

Prioritize equity outcomes for the study team to address, which could include:

- Reducing energy burdens
- Expanding access to clean energy jobs
- Increasing access to clean mobility
- Assessing impacts to housing
- Improving reliability and resiliency
- Improving access to rooftop solar

Role of the Steering Committee:

Provide strategic and technical direction to the LA100 Equity Strategies study through the identification of prioritized energy equity outcomes and play a critical role in broader community engagement to ensure community members are involved in the process.



A nighttime photograph of a city skyline, likely Los Angeles, with numerous skyscrapers and buildings illuminated. A large green rectangular box is overlaid on the middle of the image, containing white text. The background is a dense urban landscape with many lights.

Role of the Advisory Committee:

Provide input, ideas, comments, perspectives, and feedback on the feasibility of strategies and approaches identified by the Steering Committee and identify Equity Strategy priorities that intersect with other City departments' programs and/or have potential for multi-benefit programs and partnerships with other City departments.

LA100

ACHIEVING 100% RENEWABLE ENERGY IN LOS ANGELES



LA100 Study

Completed

Unprecedented analysis ID'd multiple paths to achieve 100% target

Considers reliability, equity, sustainability and affordability

- Confirmed 100% by 2035 achievable
- Community & stakeholder input

Common Investments Across All Scenarios



LA100 Equity Strategies

Fall 2021-23

Community-driven, objective to achieve equity

Robust community engagement

Areas of Focus

- Improve air quality
- Solar access
- Energy Efficiency
- Affordable rates
- Demand management
- Debt relief
- EV charging access



2022 SLTRP

Fall 2021-2022 | 2035 & 2045 Targets

Our comprehensive integrated power plan

Recommends path forward to achieve our goals

- Integrates findings of LA100
- Community & stakeholder input
- Prioritizes reliability, resiliency, equity, affordability, sustainability

Considerations

- Workforce
- Building, Operating & Maintaining
- Cost to customers
- Supply Chain Risk
- Implementation and Feasibility



Q&A

