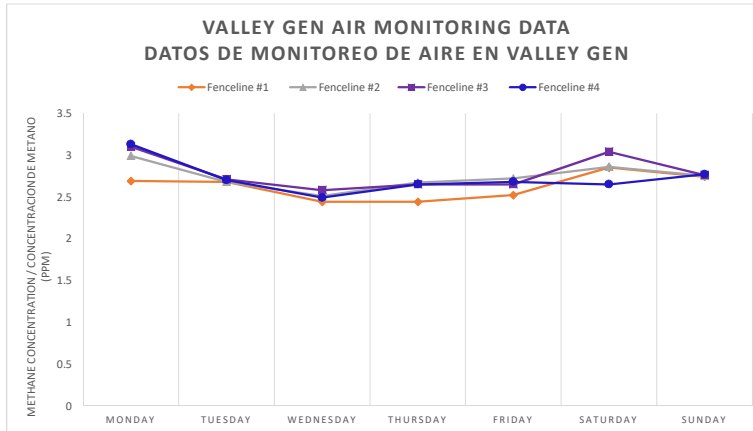


**GasMet Analyzer Readings for Week of 01/31/2022 to 02/06/2022:  
Lecturas de GasMet Analyzer para la semana 01/31/2022 to 02/06/2022:**



Day	Date	Time of Recording	Wind Direction/ strength (MPH)	Temperature (F)	Location of Recording	Methane concentration (ppm)
<i>Día</i>	<i>Fecha</i>	<i>Hora de Grabación</i>	<i>Dirección de viento/velocidad</i>	<i>Temperatura (F)</i>	<i>Ubicación de grabación</i>	<i>Concentración de metano</i>
Monday / lunes	1/31/2022	9:00am	S / 0.0 - 0.8	61.7 - 64.3	Fenceline #1	2.69
					Fenceline #2	2.99
					Fenceline #3	3.10
					Fenceline #4	3.13
Tuesday / martes	2/1/2022	1:00pm	NW, WNW / 0.0 - 0.8	56.4 - 60.1	Fenceline #1	2.68
					Fenceline #2	2.68
					Fenceline #3	2.71
					Fenceline #4	2.70
Wednesday / miércoles	2/2/2022	5:00pm	WNW, NW / 1.2 - 4.7	56.9 - 58.4	Fenceline #1	2.44
					Fenceline #2	2.51
					Fenceline #3	2.58
					Fenceline #4	2.49
Thursday / jueves	2/3/2022	9:00pm	SE, ESE, S / 4.7 - 8.1	52.7 - 56.6	Fenceline #1	2.44
					Fenceline #2	2.67
					Fenceline #3	2.65
					Fenceline #4	2.65
Friday / viernes	2/4/2022	9:00am	WNW, W / 1.2 - 3.9	62.5 - 65.5	Fenceline #1	2.52
					Fenceline #2	2.72
					Fenceline #3	2.65
					Fenceline #4	2.68
Saturday / sábado	2/5/2022	1:00pm	NE, NNE / 0.8 - 3.1	69.7 - 72.4	Fenceline #1	2.85
					Fenceline #2	2.86
					Fenceline #3	3.04
					Fenceline #4	2.65
Sunday / domingo	2/6/2022	5:00pm	NW, WNW / 0.8 - 1.7	71.6 - 74.6	Fenceline #1	2.74
					Fenceline #2	2.75
					Fenceline #3	2.76
					Fenceline #4	2.77

